

*Johann Georg Weichenberger*

(1676 - 1740)

# Gigue

La mineur

**Le manuscrit de Brno CZ-Bm13268**

**Casimir Wenceslas Comte Verdenberg et Namiest**

**Année 1713**

*Brno, Musée régional de Moravie, département d'histoire de la musique*

*Provenance : Bibliothèque musicale de l'abbaye de Rajhad 2*

**(CZ-Bm Ms. sig. A.13.268)**

*Folios 12v - 13r*



# 23. Gigue

1. 2. 3. 4. 5. 6. 7. 8. 9. 10.

4. 5. 6. 7. 8. 9. 10. 11. 12. 13. 14.

8. 9. 10. 11. 12. 13. 14. 15. 16. 17.

12. 13. 14. 15. 16. 17. 18. 19. 20. 21. 22.

18. 19. 20. 21. 22. 23. 24. 25. 26. 27.

piano

22. 23. 24. 25. 26. 27. 28. 29. 30. 31. 32.

1. Tablature originale : pas d'indication rythmique

27

Handwritten musical notation for measures 27-30. The notation includes a treble clef and a 6/8 time signature. The melody consists of eighth and sixteenth notes with various rests. The bass line includes a double bar line in the second measure, indicating a change in the lower part of the piece.

31

Handwritten musical notation for measures 31-34. The notation continues with a treble clef and 6/8 time signature. It features a variety of note values and rests, with some notes beamed together. A double bar line appears in the fourth measure.

35

Handwritten musical notation for measures 35-38. This system includes a 4-measure rest in the second measure. The notation features a treble clef and 6/8 time signature. A repeat sign with first and second endings is used at the end of the system.

39

Handwritten musical notation for measures 39-42. The notation continues with a treble clef and 6/8 time signature, featuring various note values and rests.

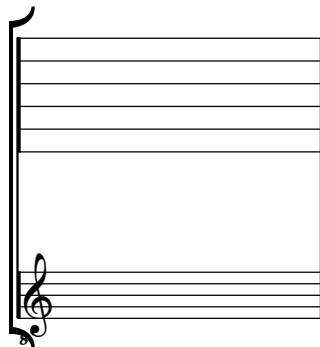
43

Handwritten musical notation for measures 43-46. The notation concludes with a treble clef and 6/8 time signature. It features a double bar line in the second measure and ends with a decorative flourish.

# Tonalité : La mineur

*Accord ordinaire du luth*

*Scordature par octave*



*Accord des 11 chœurs du luth*

