

**[Wolff Jacob Lauffensteiner]**

(avril 1676 - 26 mars 1754)

# Allemande

Fa majeur

## **Manuscrits de Brno CZ-Bm372**

*Brno, Moravské zemské muzeum,*

*oddělení dějin hudby MZM*

*(CZ-Bm Ms. sig. A.372)*

*Page 7*

*Voir dans le manuscrit Harrach A-ROII, pages 27 et 28, L'Allemanda  
de la Suite 1. [HR113]*

*Voir dans le manuscrit de Götting A-GÖ1, folio 28r., L'Allemande  
Lauffenstein de la Suite. [A-GO1\_56]*



# Allemande

The image displays a handwritten musical score for an Allemande in F major. The score is written on a single staff with a common time signature (C). It consists of several measures, each with a corresponding line of rhythmic notation and tablature. The rhythmic notation uses letters 'a', 'r', and 'b' to represent notes, with various accents and slurs. The tablature uses numbers 1-4 to represent fret positions. The score is divided into measures by vertical bar lines, with measure numbers 3, 5, 7, 8, and 11 indicated on the left. There are four asterisks (1\*) through (4\*) marking specific measures. The notation includes various rhythmic values such as eighth and sixteenth notes, and rests. The tablature is written below the staff, with some notes marked with a '4' to indicate a fourth fret. The score ends with a double bar line and repeat dots.

1. Tablature originale : croche pointée, qui marque le premier temps fort qui suit l'anacrouse, caractéristique de l'allemande.
2. Tablature originale : Fa (a sur le 8ème cœur).
3. Tablature originale : indication rythmique de doubles croches.
4. Tablature originale : croche pointée, qui marque le premier temps fort qui suit l'anacrouse, caractéristique de l'allemande.

13

Handwritten musical notation for measures 13-14. The top staff contains notes with slurs and dynamic markings like 'f' and 'e'. The bottom staff contains notes with slurs and dynamic markings like 'a' and 'a'.

15

Handwritten musical notation for measures 15-16. The top staff contains notes with slurs and dynamic markings like 'f' and 'h'. The bottom staff contains notes with slurs and dynamic markings like 'a' and 'a'.

17

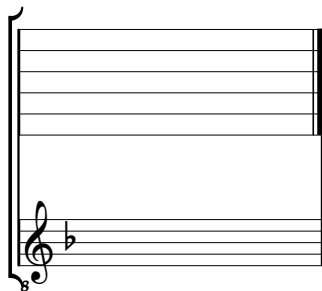
Handwritten musical notation for measures 17-18. The top staff contains notes with slurs and dynamic markings like 'f' and 'h'. The bottom staff contains notes with slurs and dynamic markings like 'a' and 'a'.

19

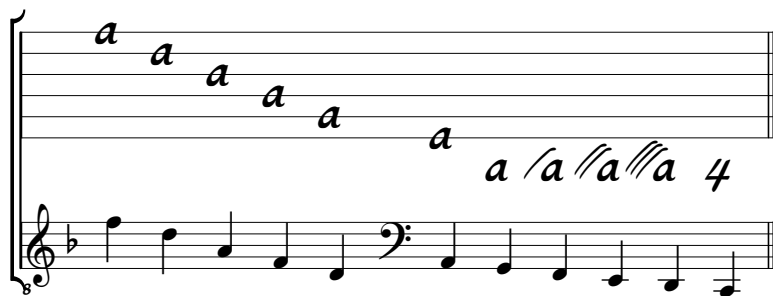
Handwritten musical notation for measures 19-20. The top staff contains notes with slurs and dynamic markings like 'f' and 'h'. The bottom staff contains notes with slurs and dynamic markings like 'a' and 'a'. The piece ends with a double bar line and a decorative flourish.

# Tonalité et accord du luth : Fa majeur.

*Scordatura par octave*



*Accord ordinaire des 11 chœurs du luth*



The diagram shows a lute with six strings. The top string has five notes: a, a, a, a, a. The bottom string has five notes: a, /a, //a, ///a, 4. A treble clef and a flat sign (B-flat) are shown at the bottom left of the strings, indicating the key signature.