

***Johann Michael Kühnel***

*(autour de 1665 - après 1730)*

[Trois pièces d'une]  
[Suite]

Si bémol majeur

**Manuscrit de Brno CZ-Bm372**

*Brno, Moravské zemské muzeum,*

*oddělení dějin hudby MZM*

*(CZ-Bm Ms. sig. A.372)*

*Pages 34 à 37*

*Voir dans le manuscrit de Vienne A-W18829, pages 5 à 14 (folios 2v. à 7r.),  
la Suite. [V18829\_1b]*

*Voir dans le manuscrit de Wroclaw PL-WRu, pages 55 à 57, la Courante  
de la Parthia Auth: M. Kühnel. [WRu23]*

*Voir dans le manuscrit d'Haslemere GB-HAB2, pages 157 et 158, la Gigue.  
[Has104]*



# *Les pièces de la Suite*

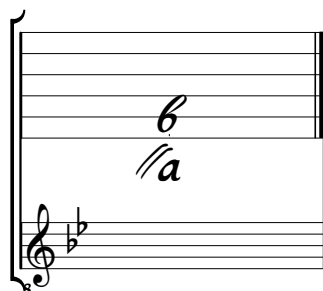
*Concerto*

*Courent*

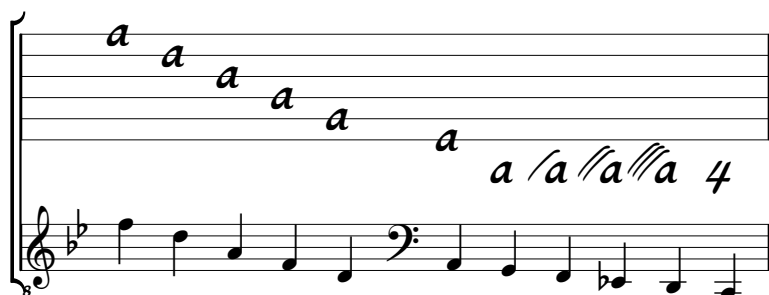
*Guigue*

Tonalité : Si bémol majeur.

*Scordature par octave*



*Accord des 11 chœurs du luth*



# Concerto

The image shows a handwritten musical score for a piece titled "Concerto". The score is written on a single staff with a treble clef and a common time signature (C). The notation is a form of musical shorthand, likely a tablature, consisting of letters (a, b, r, e, f, g, h, i, k) and rhythmic symbols (accents, slurs, and vertical lines). The score is divided into measures, with measure numbers 3, 6, 8, 10, 13, 16, 19, and 22 indicated on the left. The notation includes various rhythmic markings such as slurs, accents, and vertical lines, and some dynamic markings like "fine". The piece concludes with a double bar line and the word "fine".

1. Tablature originale : l'indication rythmique est croche.

25 *m* *m* *m*  
Handwritten musical notation on a five-line staff with various notes and rests.

28 *m* *r* *m* *r* *m* *r* *m* *m* *r* *m* *m* *r* *m* *m*  
Handwritten musical notation on a five-line staff with various notes and rests.

31 *r* *m* *r* *m* *r* *m* *m* *m*  
Handwritten musical notation on a five-line staff with various notes and rests.

34 *m* *m* *m*  
Handwritten musical notation on a five-line staff with various notes and rests.

37 *m* *r* *m* *r* *m* *r* *m* *r* *m* *r* *m* *r* *m* *r*  
Handwritten musical notation on a five-line staff with various notes and rests.

40 *r* *m* *r* *m* *r* *m* *r* *m* *m* *m*  
Handwritten musical notation on a five-line staff with various notes and rests.

43 *m* *m* *m*  
Handwritten musical notation on a five-line staff with various notes and rests.

46 *m* *m*  
Handwritten musical notation on a five-line staff with various notes and rests.

48 *r* *m* *r* *m*  
Handwritten musical notation on a five-line staff with various notes and rests.



Da Capo

Courent

3/4

6 6 6 | 6 6 a | r a a r 2 6 a | 6 r a 6 a 6 | a 6 a a

2 4 4 4 4 2

5

a r a 6 2 | a a 6 a r 6 2 6 a 6 | a a 6 a 2 a 6 2 a 2 a 6 | a a 6 a r 2 r a r a 6 2 6

a a a a 4 2 a a 4

12

a 6 a 6 a r 2 r a r a 6 2 6 | a 6 a 6 a 2 a a 6 | 2 a 6 2 a 2 6 a a 2

2 a a 4 2 a a a a

18

6 a r a 2 2 a r 2 2 a r e r e f r f 2 e e r a r r 2 2 a r 2

2 4 a a a a a 2 4 a a

25

2 2 2 2 2 6 a a 2 6 r 6 a r 6 a 2 6 a 6 r 6 a 6 2 2 a 6

a a a a a a a

33

a 2 a 6 | 2 a 6 r a r a 6 2 6 2 e 2 e 2 e

2 a 6 a a a 2 a b a d a a a a f f f f f

40

h h h f f f e e e r r r a a 6 a 6 r 2 6 a a a 6 a 6

2 2 f f 2 2 6 6 a a 6 a a 6 a 6

a a a a a

47

2 6 2 a 6 a r 6 2 e 2 a a 6 r 6 r 2 a a 6 a 6 2 f 2 f 6 6 6

a a a a a a a a a a 2 2



# Guigue

Handwritten musical score for a piece titled "Guigue". The score is written on a single staff with a treble clef and a 6/8 time signature. The notation uses letters (a, b, g, r) and numbers (1-7) to represent notes and rests. The piece is divided into measures, with measure numbers 5, 11, 17, 22, 27, 32, and 38 indicated. The score includes various musical notations such as slurs, accents, and dynamic markings (e.g., *f*, *hf*). A double bar line with repeat dots is used at measure 17 and measure 38. A decorative flourish is present at the end of the piece, following measure 38. A note in measure 10 is marked with a circled asterisk (1\*), and a note in measure 38 is marked with a circled asterisk (2\*).

1. Basse absente de la tablature originale.  
 2. Tablature originale : pas d'indication rythmique.