

Wolff Jacob Lauffensteiner

(avril 1676 - 26 mars 1754)

[Suite]

De Mons[ieur] Lauffenstein

Fa majeur

Manuscrit de Göttweig A-GÖ1

Göttweig, Benediktinerstift,

Musikarchiv

(A-GÖ ms. Lautentabulatur Nr. 1)

Folios 48 v. et 50 r.

Pas de correspondance.



Les pièces de la Suite

De Mons[ieur] Lauffenstein

Marche

Courante

Boure

Menue

Trio

Sarabande

Gigue

De Mons[ieur] Lauffenstein

Marche

Handwritten musical notation for a march, consisting of ten systems of staves. The notation includes rhythmic symbols (vertical strokes with flags) and letters (a, e, r) representing notes. Some letters are underlined or have other markings. The piece is in 4/4 time, as indicated by the '4' at the end of the first staff. The notation is organized into systems, with measure numbers 5, 10, 15, 21, 27, and 32 marked on the left. The piece concludes with a double bar line and a decorative floral ornament. A small asterisk (*) is placed below the final staff.

[Da Capo]

1. Tablature originale : pas d'indication rythmique.

Courante

3/4

1. Tablature originale : accord raturé et illisible.

6

12

19

25

31



(*)

1. Tablature originale : accord raturé et illisible.

Boure

Handwritten musical score for Boure, featuring rhythmic notation above the staff and letter-based notes below. The score is divided into systems with measure numbers 4, 8, 13, 18, and 22. The notation includes various rhythmic values (e.g., eighth, sixteenth, and quarter notes) and letter-based notes (e.g., a, e, r, g). The score concludes with a decorative floral ornament.

4

8

13

18

22



Menue

Handwritten musical notation for the piece "Menue". The notation is presented in five systems, each with a five-line staff. Above the staves are rhythmic symbols (vertical stems with flags, some with 'm' or 'n' above them). The notes are written in a shorthand style using letters 'e', 'a', 'r', 'g', 'h', 'i', 'b', '6', '2', '3', '4', '5', '6', '7', '8', '9', '0', and '1'. Some notes are grouped with slurs or brackets. The piece begins with a 3/4 time signature. There are repeat signs (double vertical lines with dots) at the end of the second system and the fifth system. A first ending mark (1*) is located below the fourth system. The piece concludes with a final double bar line and repeat dots.



1. Tablature originale : pas d'indication rythmique.

Trio

Tonalité : La mineur

3

5

10

15



Menue Da Capo

Sarabande

Handwritten musical notation for the first system of the Sarabande. It features a treble clef and a 3/4 time signature. The melody is written on a five-line staff with various note values and rests. The bass line is indicated by a 4/4 time signature and rests on a lower line. The notation includes slurs and dynamic markings.

Handwritten musical notation for the second system, starting at measure 6. It includes a repeat sign (double bar line with dots) in the middle of the system. The notation continues with various note values and rests.

Handwritten musical notation for the third system, starting at measure 12. It features a repeat sign and a 'R' marking below the staff, possibly indicating a repeat or a specific performance instruction.

Handwritten musical notation for the fourth system, starting at measure 18. The notation continues with various note values and rests.

Handwritten musical notation for the fifth system, starting at measure 23. It includes a repeat sign and ends with a decorative floral ornament.



Gigue

6/8 *ra* | *erae a* | *Ferr r* | *arara* | *a* | *e e*
a | *a* | *la* | *la* | *la* | *la* | *a*

5 *r r r* | *J r r* | *r r r* | *J J* | *r r r*
eraa | *arar* | *era r* | *a* | *e* | *e e e e*
la | *la* | *a* | *a* | *la*

10 *r J r r* | *r J J r r* | *r J r r* | *r J r r* | *r J r r*
ere a | *a a e e* | *e* | *r r r r* | *r r* | *a e e e*
a | *r* | *a* | *a* | *a* | *a*

16 *J r J r r* | *r J r r* | *r J r r* | *r J r r* | *r J r r*
e r | *e r e r* | *ra e a* | *r r r e r* | *ara e e* | *era a*
4 | *r* | *a* | *a* | *la* | *a* | *la*

(1*) *J J m r r* | *r r r* | *r J m r* | *J r*
a | *r* | *e a* | *ra r r* | *ra e e r e* | *ar a a* | *a e r e e*
la | *R* | *4* | *4* | *la* | *a* | *a* | *a* | *a* | *la*

22 *r J r r* | *J r J r r* | *r r r* | *r r m r* | *J r J*
rea a | *ar a e* | *a r r* | *era a* | *a e a* | *a e a*
la | *la* | *a* | *a* | *la* | *a* | *a* | *a* | *a*

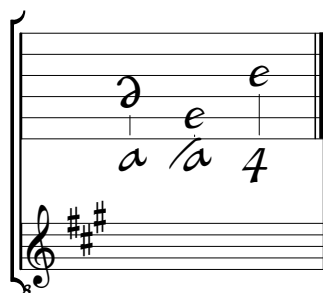
27 *r J r r* | *J r J r r* | *r r m r* | *J r J*
rea a | *ar a e* | *a r r* | *era a* | *a e a* | *a e a*
la | *la* | *a* | *a* | *la* | *a* | *a* | *a* | *a*



1. Tablature originale : l'ornement est une appoggiature descendante.
 2. Tablature originale : pas d'indication rythmique de noire et doubles croches.

Tonalité et accord du luth : La majeur

Scordature par octave



Accord des 11 chœurs du luth

The image shows a lute tablature and a treble clef staff. The tablature consists of six lines with notes 'a', 'a', 'a', 'a', 'a', 'a', 'a', 'a', 'a', 'a', 'a', '4' written below them. The treble clef staff has a key signature of two sharps (F# and C#) and a 4/4 time signature. The notes in the staff correspond to the tablature: 'a' on the first line, 'a' on the second line, 'a' on the third line, 'a' on the fourth line, 'a' on the fifth line, and '4' on the sixth line.