

Silvius Leopold Weiss

(12 oct. 1686 - 16 oct. 1750)

Suite [3]
à Lute Solo
par Weise

(S-C 77 - S-C 40* - S-C 10* ou S-C 83.5)

[Si bémol majeur]

Manuscrits Harrach, Schloß Rohrau

Ms Harrach I - A-ROI

Folios 17 à 23

Voir dans le présent manuscrit Harrach I, page 118, le Menuet de la suite 10 (HR18).

Voir dans le manuscrit de Londres, page 136, la pièce sans nom [menuet ?] (WL28).

Voir dans le manuscrit de Wroclaw 2002 (PL-Wru) page 51, Menuet Junior Weis (WRu19).

Les pièces de la suite

Allemande de Mr: Weise.

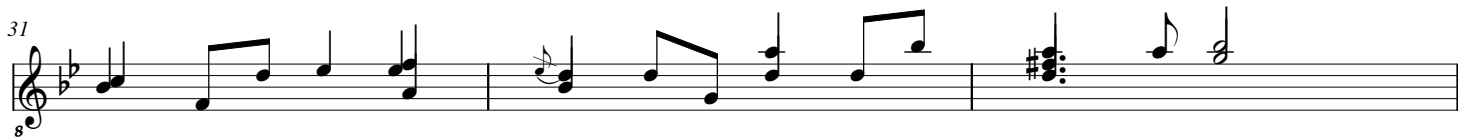
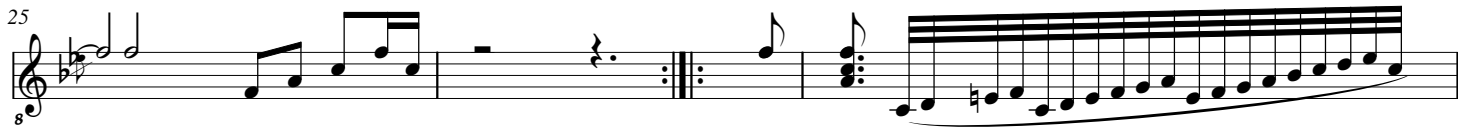
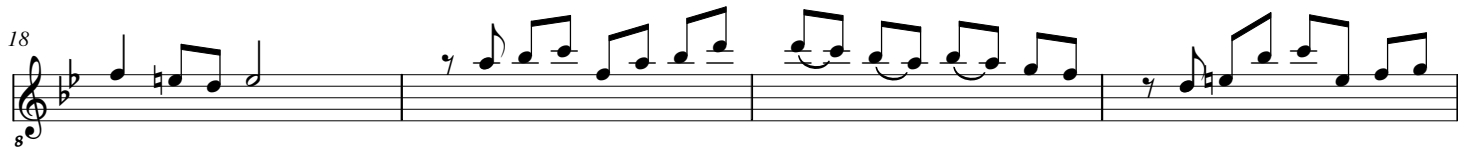
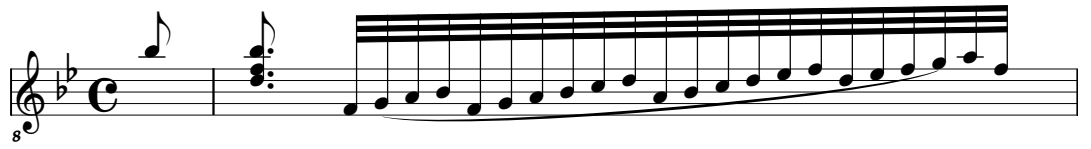
Courante du même

Marche du même

Menuet du même

- Allemande

de Mr: Weise.



1. Original : ré.

34

8

37

8

40

8

43

8

47

8

50

8

- Courante

du même

8

4

8

12

16

20

24

28

32

37 (1*)

42

47

52

57

62

67

71

1. Original : la bémol.

- Marche

Do mineur

du même

The image displays a musical score for a piece titled "Marche" in D minor. The score is written on a grand staff with a treble clef and a bass clef. The key signature consists of two flats (Bb and Eb). The melody is written in the treble clef, and the bass line is written in the bass clef with figured bass notation. The score is divided into measures, with measure numbers 5, 8, 12, 16, 19, 23, and 27 indicated at the beginning of their respective lines. The bass line includes various figures such as "8va", "8", and "8va" with a circled "8", indicating octave transpositions. A first ending bracket is marked with "(1*)" above the final measure of the piece. The piece concludes with a double bar line and repeat dots.

1. Tablature originale : sol.

31

8

35

8

39

8

43

8

47

8

- Menuet

du même

[Composé par Johann Sigismund Weiss, frère cadet de Silvius Leopold.]

1. Original : ré.
2. Original : sol.