

Silvius Leopold Weiss

(1687 - 16 oct. 1750)

Caprice de M: Weis

WeissSW42*

Fa majeur

Manuscrit Harrach, Schloß Rohrau A-ROI

Rohrau, Graf Harrach'sche Familiensammlung

A-RO Lauten-Ms. 1

Weiss Sylvio - Lautenmusik

Page 83 (Folio 40 r.)



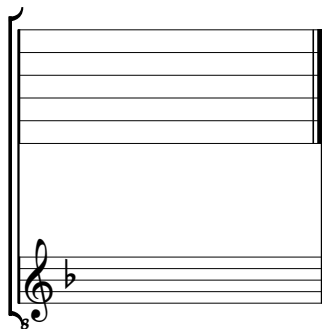
Caprice de M: Weis

Musical score for "Caprice de M: Weis". The score is written on a single staff with a common time signature (C). It consists of 25 measures, grouped into systems of five measures each. The notation includes rhythmic values (quarter, eighth, sixteenth notes, rests) and fingerings (numbers 1-4). Dynamic markings such as *f* and *a* are present. A first asterisk *(1*)* is placed above measure 5. The piece concludes with a decorative flourish at the end of measure 25.

1. Tablature originale : Si bémol (f sur le 4ème cœur).

Tonalité : Fa majeur.

Scordature par octave



Accord ordinaire des 11 chœurs du luth

