

Anonyme

[6 pièces]

[Sol majeur]

Manuscrits Harrach, Schloß Rohrau

Ms Harrach II (Schloß Rohrau)

Folios 2 à 9

Table des pièces

- 1 - Air
- 2 - Air
- 3 - Menuet
- 4 - Air
- 5 - Rondeau
- 6 - Gigue

Air

[Anonyme]

8

8

7

8

13

8

19

8

25

8

31

8

37

8

Air

[Anonyme]



4



8



12



16



20



24

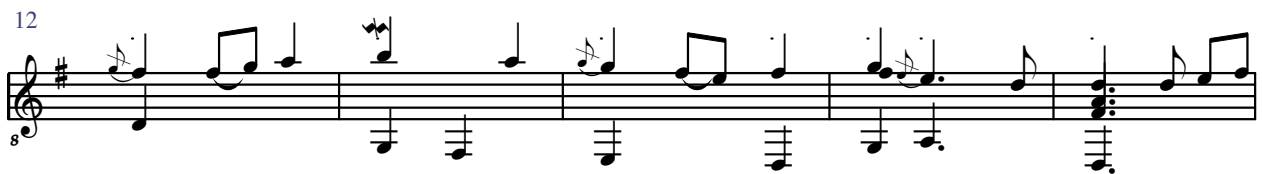


27



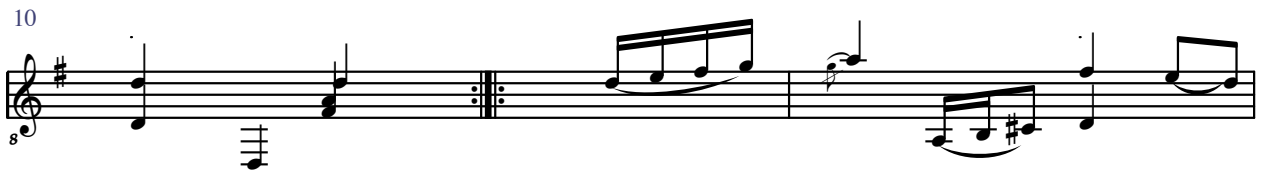
Menuet

[Anonyme]



Air

[Anonyme]



20

Musical notation for measure 20, featuring a treble clef, a key signature of one sharp (F#), and a common time signature. The notation includes a series of eighth notes and quarter notes, with a dynamic marking of *p* (piano) at the beginning.

23

Musical notation for measure 23, featuring a treble clef, a key signature of one sharp (F#), and a common time signature. The notation includes a series of eighth notes and quarter notes, with a dynamic marking of *p* (piano) at the beginning.

26

Musical notation for measure 26, featuring a treble clef, a key signature of one sharp (F#), and a common time signature. The notation includes a series of eighth notes and quarter notes, with a dynamic marking of *p* (piano) at the beginning.

29

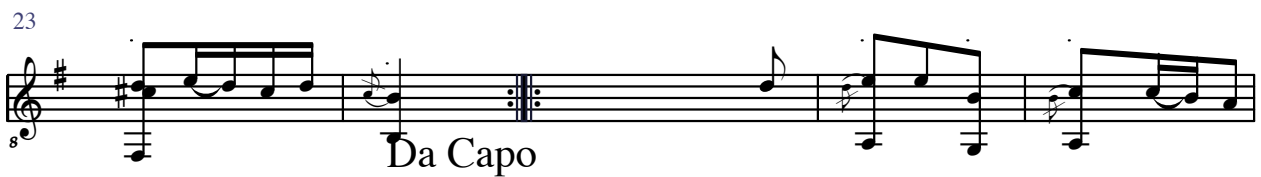
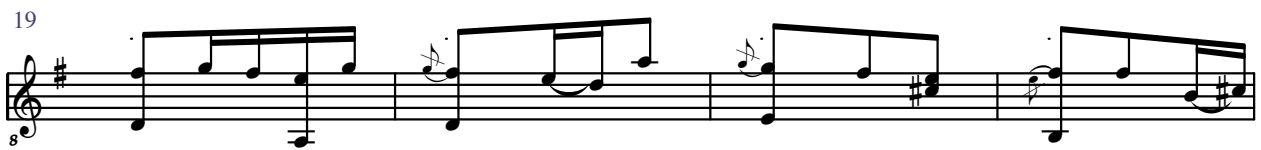
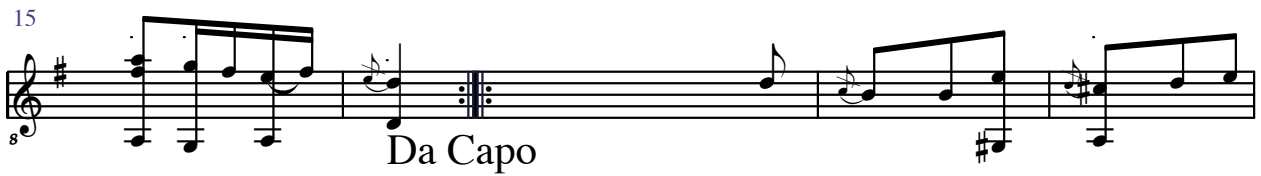
Musical notation for measure 29, featuring a treble clef, a key signature of one sharp (F#), and a common time signature. The notation includes a series of eighth notes and quarter notes, with a dynamic marking of *p* (piano) at the beginning.

32

Musical notation for measure 32, featuring a treble clef, a key signature of one sharp (F#), and a common time signature. The notation includes a series of eighth notes and quarter notes, with a dynamic marking of *p* (piano) at the beginning. The measure concludes with a double bar line and a repeat sign.

Rondeau

[Anonyme]



27



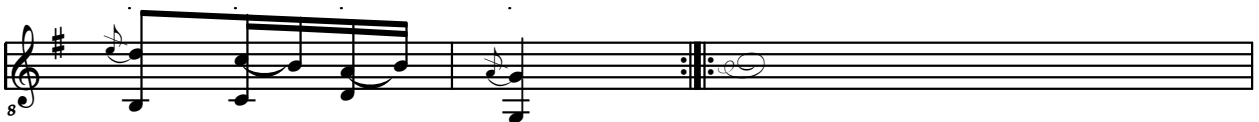
32



38



43



Gigue

[Anonyme]

8

4

9

15

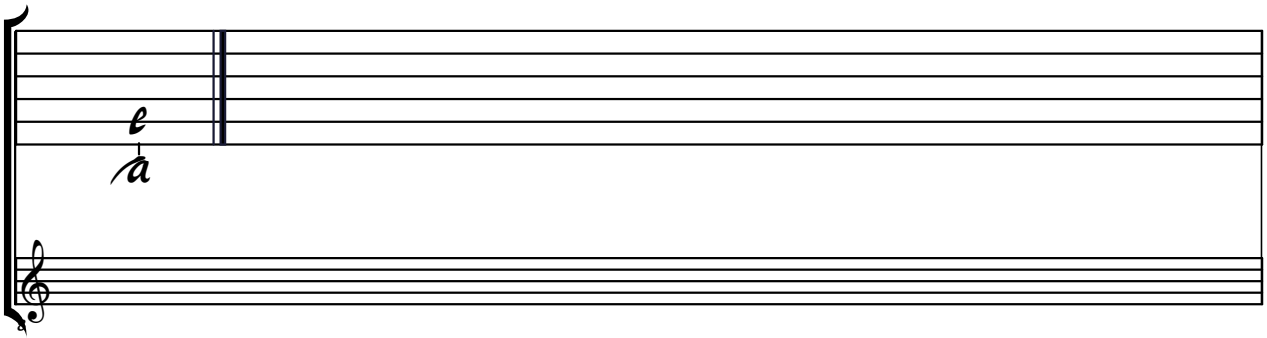
20

25

29

Tonalité et accord du luth : sol majeur

Scordatura par octave



Musical notation for Scordatura par octave. It shows a lute staff with a treble clef and a double bar line. The notes 'e' and 'a' are written on the first and second lines of the staff, respectively, indicating the scordatura.

Accord des 11 chœurs du luth



Musical notation for Accord des 11 chœurs du luth. It shows a lute staff with a treble clef and a double bar line. The notes 'a' are written on the first line of the staff, indicating the chord. The notes 'a a a a a a a a a a a 4' are written on the second line of the staff, indicating the scordatura.