

Graf Heinrich von Brühl ?
(13 août 1700 - 28 octobre 1763)

Passepied

La majeur

Manuscrit d'Haslemere
Haslemere, Carl Dolmetsch Library
GB-HAdolmetsch ms II.B.2
Page 31



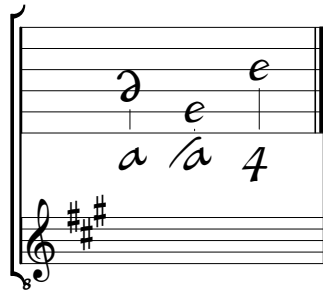
Passepied Brühl

Handwritten musical score for "Passepied Brühl". The score is written on a five-line staff with a treble clef. It features a 3/4 time signature at the beginning. The music consists of a single melodic line with various rhythmic values (quarter, eighth, and sixteenth notes) and rests. The notes are labeled with letters 'a', 'e', 'r', 'g', and 'f', representing the pitch classes. There are several measures with repeat signs (double bar lines with dots) and a section marked with a double bar line and a repeat sign. The score is divided into systems, with measure numbers 7, 14, and 20 indicated on the left. A large letter 'R' is written below the staff at the end of the piece. A decorative floral ornament is placed at the end of the final measure.

1. Liaison absente de la tablature originale.

Tonalité et accord du luth : La majeur

Scordature par octave



Accord des 11 chœurs du luth

