

P. Ilnier

Fabricana

Ré majeur

Manuscrit d'Haslemere

Haslemere, Carl Dolmetsch Library

GB-HAdolmetsch ms II.B.2

Pages 37 et 38



r m m m m m m m m m

Fabricana $\frac{3}{4}$ are | a a a a a a | rar r r r r r | ea dea dea a

a 4 a la la

P[ar] P. Ilgner

4 J. r m m m m m m m m m

a la la la a a a

8 m m m m m m m m m m

a a a a a la la la

12 J. r J. r J. r r m m m

la la la la la a a a a la la la

17 m m m m m m m m m

a a a a a

20 m k k k k k k i i i i i i h h h h h h

a a a a a

23 m k h k h k h h k i k h k h f e f e f e f e

a a a la la la la la la la

26

29

33

37

41

45

49

1. Liaison absente de la tablature originale.

53

l. r m m m m m m m m m

a) are | a e a a a a a a | r a r e r a r e r a r | e a e a e a e a
 a | a | a | a

57

l. r m m m m m m m m m

r are | a a r a a r a r a a | r a r a r a r a r e a r | r a r e r a r e r e a r
 a | a | a | a | a | a | a | a | a

61

m m m m m m m m m

e r e a e r e a e a r e | e r e r e r e r e r e r e r | r a r e r a r e r a r e
 a | a | a | a | a | a | a | a | a

64

m m m m m m m m m

a e a r a e a r a e a r | e r e a e r e a e r e a | e e e r r r e e e
 a | a | a | a | a | a | a | a | a

67

m m m m m m m m m m m m m m m

f f e e f f h h f f h h k k k k k k i i i i i i
 a | k | k | a | k | a | a | k | a | i | a | i | a | i | a

71

m m m m m m m m m r m r m m m

k k k k k k i i i i i i g e f e r a | r a r e r a r a r
 a | k | k | a | k | a | a | h | i | a | i | a | a | a | a | a | a

75

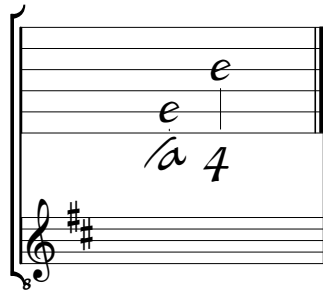
m m m m m m l.

a e a r a r e r e | a e a a a a a a
 a | a | a | a | a | a | a | a



Tonalité et accord du luth : Ré majeur

Scordature par octave



Accord des 11 chœurs du luth

Musical notation for the 11 chords of the lute. It shows a lute staff with six lines. The notes are: a on the 1st line, a on the 2nd line, a on the 3rd line, a on the 4th line, a on the 5th line, and a on the 6th line. A '4' is written below the 'a' note on the 6th line. Below the staff is a treble clef with two sharps (F# and C#).