

Compositeur anonyme

Timpanella

Ré majeur

Manuscrit d'Haslemere

Haslemere, Carl Dolmetsch Library

GB-HAdolmetsch ms II.B.2

Page 39



Timpanella

2/4

6

13

18

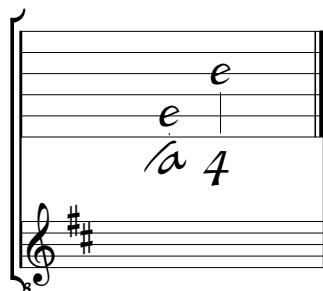
24

31

The musical score for 'Timpanella' is written in 2/4 time. It consists of six systems of music, each with a vocal line and a corresponding rhythmic line. The lyrics are written below the rhythmic line. The score includes various musical notations such as notes, rests, and dynamic markings like *ff* and *mf*. The lyrics are:
 System 1: e e r e r e e a a e e e r e r e e a a g g e f e
 System 2: a a a a a a a a a a a a a a
 System 3: g f g e e r e r e e e r r b b r r r a r e a e r a
 System 4: a a a a a a a a a a a a a a
 System 5: r r a e a r a e a r a e a e e r r a e a r a e a r a e e r a
 System 6: a a a a a a a a a a a a a a
 System 7: e e e e e r e r e r e r e e a a a r a r g g e g e
 System 8: a a a a a a a a a a a a a a
 System 9: g e e g e g e g a r a e r a i i g i g i h h g i i g i g i h h a
 System 10: a a a a a a a a a a a a a a
 System 11: e a b r a r e e f e f e h g f e f g g h g h
 System 12: a a a a a a a a a a a a a a

Tonalité et accord du luth : Ré majeur

Scordature par octave



Accord des 11 chœurs du luth

