

Compositeur anonyme

Allegro Menuet

Ré majeur

Manuscrit d'Haslemere
Haslemere, Carl Dolmetsch Library
GB-HAdolmetsch ms II.B.2
Page 40



Allegro

$\text{r m r } \downarrow \quad \text{r m r } \downarrow \quad \text{r m r}$
 $\text{2 } \text{e a e a r} \text{ e r } \text{ e a e a r} \text{ e r } \text{ e a e a r}$
 $\text{4 } \text{a} \quad \text{e} \quad \text{a} \quad \text{a} \quad \text{a} \quad \text{e} \quad \text{a} \quad \text{a} \quad \text{a} \quad \text{e}$

$\text{r m r } \text{r} \quad \downarrow \quad \text{r m r } \downarrow \quad \text{r m r } \downarrow \quad \text{r m r}$
 $\text{e a e a r} \text{ e a r r} \text{ e a} \quad \text{ere} \quad \text{g} \quad \text{igi} \quad \text{k} \quad \text{ere}$
 $\text{a} \quad \text{e} \quad \text{a} \quad \text{a} \quad \text{a} \quad \text{a} \quad \text{a} \quad \text{a} \quad \text{a} \quad \text{a} \quad \text{a} \quad \text{a}$

$\text{r m r } \text{m r m r} \downarrow \quad \text{r m r } \downarrow \quad \text{r m r } \downarrow$
 $\text{rbr} \text{ e r a r a e } \text{f} \quad \text{e a g a r} \text{ e r } \text{ e a g a r} \text{ e r}$
 $\text{a} \quad \text{a} \quad \text{a} \quad \text{a} \quad \text{a} \quad \text{a} \quad \text{a} \quad \text{a} \quad \text{a} \quad \text{a} \quad \text{a} \quad \text{a}$

$\text{m} \quad \text{m} \quad \text{m} \quad \text{r}$
 $\text{r a r} \text{ ere} \quad \text{e e e} \text{ e d e} \text{ e r a e r a e r} \text{ a a} \quad \text{k} \text{ h k h k h h}$
 $\text{4 } \text{a} \quad \text{a} \quad \text{a} \quad \text{a} \quad \text{a} \quad \text{a} \quad \text{a} \quad \text{a} \quad \text{a} \quad \text{a} \quad \text{a}$

$\text{r} \quad \text{r m} \quad \text{r} \quad \text{r m} \quad \text{r}$
 $\text{k} \quad \text{i g i g i g} \text{ i} \quad \text{g e f e f e e} \text{ f e r e}$
 $\text{a} \quad \text{a} \quad \text{a} \quad \text{a} \quad \text{a} \quad \text{a} \quad \text{a} \quad \text{a} \quad \text{a} \quad \text{a} \quad \text{a}$

$\text{m r m r} \downarrow$
 $\text{e r a r a e} \text{ f} \quad \text{a} \quad \text{a}$
 $\text{a} \quad \text{a} \quad \text{a} \quad \text{a}$



Menuet

3/4

5

10

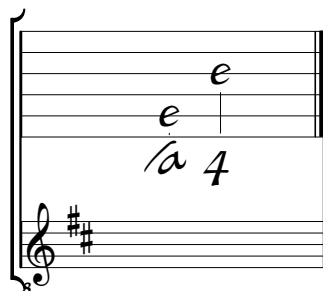
16

22

Handwritten musical notation for a Minuet in G major, page 2. The score is written on a grand staff with a treble clef and a 3/4 time signature. It consists of five systems of music. The first system (measures 1-4) starts with a treble clef and a 3/4 time signature. The second system (measures 5-8) begins with a dynamic marking of 'f'. The third system (measures 9-12) includes a repeat sign and a double bar line. The fourth system (measures 13-18) continues the melody. The fifth system (measures 19-22) ends with a repeat sign and a double bar line. The score is decorated with various musical notations including slurs, accents, and dynamic markings. A decorative flourish is placed at the end of the piece.

Tonalité et accord du luth : Ré majeur

Scordature par octave



Accord des 11 chœurs du luth

