

*[Jacques de Saint-Luc]*  
(1616 - 1708)

# Allemande

Ré majeur

## **Manuscrits d'Haslemere**

*Haslemere, Carl Dolmetsch Library*

GB-HAdolmetsch ms II.B.2

*Page 43*



# Allemande

Musical score for Allemande in G major, featuring a single melodic line with rhythmic notation and figured bass. The score is divided into measures with measure numbers 4, 9, 14, 18, and 23. It includes various musical notations such as clefs, time signatures, and dynamic markings like 'f'.

The score consists of the following measures:

- Measures 1-3: Initial melodic phrase with a common time signature.
- Measure 4: Continuation of the melodic line.
- Measures 5-8: Further development of the melody.
- Measures 9-13: A section with a 6/8 time signature.
- Measures 14-17: Continuation of the 6/8 section.
- Measures 18-22: A section with a 5/4 time signature, including a repeat sign.
- Measures 23-26: Final section of the score.

28

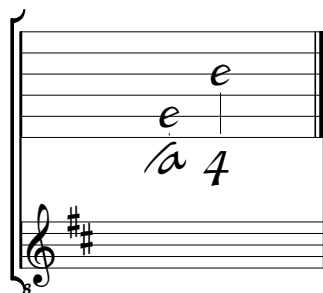
32

36



# Accord du luth : Ré majeur

*Scordature par octave*



*Accord des 13 chœurs du luth*

Musical notation for the 13 chords of a lute in D major. The notation consists of two staves. The upper staff is a five-line staff with a brace on the left side. It contains the notes 'a' on the first line, 'a' on the second line, 'a' on the third line, 'a' on the fourth line, and 'a' on the fifth line. Below the 'a' on the fifth line is the number '4'. The lower staff is a five-line staff with a treble clef and two sharps (F# and C#). It contains the notes 'a' on the first line, 'a' on the second line, 'a' on the third line, 'a' on the fourth line, and 'a' on the fifth line. Below the 'a' on the fifth line are the numbers '4 5 6'.