

Compositeur anonyme

Courante

Ré majeur

Manuscrit d'Haslemere

Haslemere, Carl Dolmetsch Library

GB-HAdolmetsch ms II.B.2

Pages 43 et 44



Courante

3 4

ar66rar a a a are a

a 4 e r r fella la a r

5

e ar re re a r e are a r a a e e r e r a r a

a a la la la 4 5 a 4

12

e k i k i h k g e f e e r e e are a r r a a

la a a da a la la 4 la 4 la

18

a e a e r e a r e r a e r r r r r g e f

a da a la la 4

24

e r e r a r a e a e e e e e e g g e f

la 4 5 a la a

30

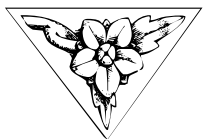
e f e f e e r e r r e e r a r r a e e a r e

la la la 4 a r a

35

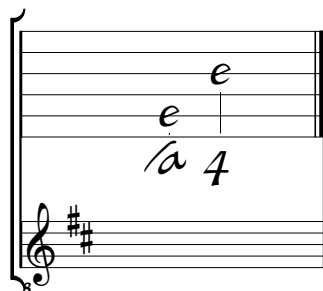
r r e r a r e a r a r r a g a a a a

a a a la a a la a a a a



Tonalité et accord du luth : Ré majeur

Scordature par octave



Accord des 12 chœurs du luth

Musical notation for the 12 chords of the lute. It shows a lute staff with six lines. The notes are: a on the 1st line, a on the 2nd line, a on the 3rd line, a on the 4th line, a on the 5th line, and a 4 5 on the 6th line. Below the staff is a treble clef with two sharps (F# and C#).