

Compositeur anonyme

Aria

Ré majeur

Manuscrit d'Haslemere

Haslemere, Carl Dolmetsch Library

GB-HAdolmetsch ms II.B.2

Page 44



Aria

r m r m r m r m r m
 a a a r r e r r a a a a
 a a a a a a a a a a a a

3 m m r m r m
 r a r e r r r e r e a e e e a e a r a r a e a e
 a l a a l a a a l a r a a a a l a

5 r m r m m
 r e r a a a a r a r e r r r e r e a e a e
 a l a a l a l a l a l a a l a a l a

7 m r m r m r m m r m r
 a e a r a r a e r r a a a r e r r a a a
 r a a a l a l a a r e r l a r e

9 r m r m r m r m r m r m
 r a a e r e g e f e r b b b r e
 e r e a a e a l a l a a a r a a l a

11 r m r m r m r m r m
 r e r r b r b r a e r b r r b r e e e
 l a a r l a l a a l a l a l a r r b l a

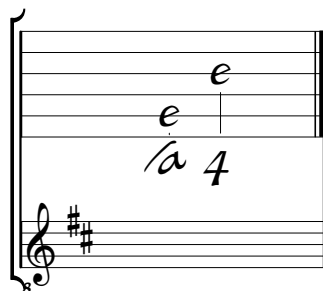
13 r m r m
 a e e e a e a r r r e r r e a r e x a a a
 r r l a r a b l a a b a l a a a l a l a

15 m m r m r m
 r a r e r r r e r e a e e e a e a r a r a e x a a
 a l a a l a a a l a r a a a a l a



Tonalité et accord du luth : Ré majeur

Scordature par octave



Accord des 12 chœurs du luth

