

*Compositeur anonyme*

# Gigue

Ré majeur

**Manuscrit d'Haslemere**

*Haslemere, Carl Dolmetsch Library*

GB-HAdolmetsch ms II.B.2

*Page 47*



# Gigue

Handwritten musical score for a Gigue in G major. The score is written on a single staff with a treble clef and a 6/8 time signature. The music consists of 28 measures, divided into four systems of seven measures each. The notation includes various rhythmic values (quarter, eighth, and sixteenth notes), rests, and accidentals (sharps and naturals). The piece concludes with a double bar line and repeat dots.

Measure 1:  $\frac{6}{8}$  a a e e e r e a e a a a r e r a r e r e a r e a

Measure 5: r m r r m m r r r j r r r a r r r e a a r a a r e a r r b a b r e e e r e a a a

Measure 10: r m j r r r m r j r j m e d e r a r a a a r r r r a r a r a r a r a b a b

Measure 15: j m j m j m j r j r j r r e r r a r g e g r r a r r r a r r e r e r b r b r b

Measure 21: r j r r r e b r b r e r e r e e r e a a a b r a a a a 4 a a a a a a

Measure 26: r m r r m r r j m r r j a r a r a r r e r e r e a e r e r e a r e e d e r e e r e a

30

35

40

44

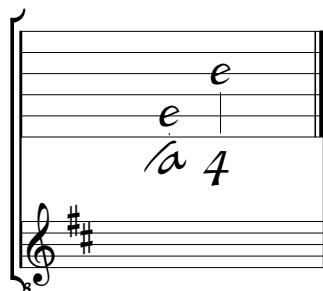
48

52



# Tonalité et accord du luth : Ré majeur

*Scordature par octave*



*Accord des 11 chœurs du luth*

