

[Compositeur anonyme]

[3 pièces]

Ré majeur

Manuscrit d'Haslemere

Haslemere, Carl Dolmetsch Library

GB-HAdolmetsch ms II.B.2

Page 57

Pas de correspondance.



Les pièces

Courante

Sarabande

Gavotte

Courante

♩ ♪ ♩
♩
♩ ♩ ♩ ♩ ♩
♩

3
4
4
4
4

6

11

17

23

Musical score for Courante, featuring a single staff with rhythmic notation and tablature. The score is divided into measures, with measure numbers 6, 11, 17, and 23 indicated. The tablature uses letters 'a' and 'e' on a six-line staff. A double bar line with repeat dots is present at the end of measure 23. A decorative flourish is located at the end of the score.

1. Tablature originale : Sol naturel (c sur le 4ème chœur).

Sarabande

6

12


1. Tablature originale : La (a sur le 3ème chœur).

Gavotte

5

9

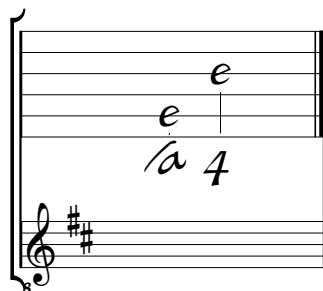
13

Da Capo 

1. Tablature originale : Ré (a sur le canto).

Accord du luth : Ré majeur

Scordature par octave



Accord des 12 chœurs du luth

