

Gleinig

? - ?

Courante

P[ar] Gleinich

Sol majeur

Manuscrit d'Haslemere

Haslemere, Carl Dolmetsch Library

GB-HAdolmetsch ms II.B.2

Page 104

Sans correspondance.



Allemande. P[ar] Gleinich

Handwritten musical score for Allemande in Sol major, Gleinich. The score consists of six systems of music, each with a treble clef and a common time signature. The notation includes various rhythmic values (quarter, eighth, sixteenth notes), rests, and ornaments. The notes are written in a shorthand style with letters 'a', 'r', 'e', 'f', 'g' and accidentals. The systems are numbered 4, 8, 12, 16, and 20 on the left margin.

24

e r a r a r a | g a a r r | a r a r a r | a r a r a r

28

r r r r a r | r r r e r a a | r r r a a a | r e r a e r e r

32

e r a h | g h f g h a r e | r e r e r a r | r a g r a r a r

36

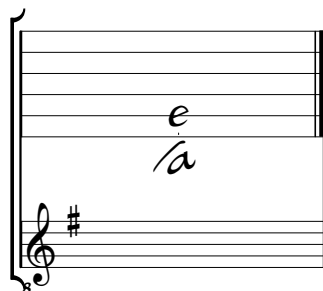
a a a r a | r r r a a a | a a a r r a r | a a a r a

40

g r a r r r | a a r a | r r a | r a r a

Tonalité et accord du luth : Sol majeur

Scordature par octave



Accord des 11 chœurs du luth

