

[Compositeur(s) anonyme(s)]

Menuet Gigue

Sol majeur

Manuscrit d'Haslemere
Haslemere, Carl Dolmetsch Library
GB-HAdolmetsch ms II.B.2
Pages 107 et 108

Sans correspondance.



Menuet.

Handwritten musical score for a Minuet in G major, featuring a 3/4 and 4/4 time signature change. The score is written on a grand staff with treble and bass clefs. It includes rhythmic notation (quarter, eighth, and sixteenth notes) and fingerings (numbers 1-5). The piece is divided into measures, with measure numbers 7, 14, 21, 28, and 35 indicated on the left. The notation includes various ornaments and slurs. The piece concludes with a double bar line and repeat dots.



Gigue.

Handwritten musical score for a Gigue in Sol major, 6/8 time signature. The score consists of six systems of music, each with a treble clef and a 6/8 time signature. The notation includes various rhythmic values (quarter, eighth, sixteenth notes), rests, and ornaments. The key signature is one sharp (F#).

System 1 (Measures 1-4):
 Treble clef, 6/8 time. Notes: G4, A4, B4, A4, G4, F#4, E4, D4, C4. Ornaments: G4, A4, B4, A4, G4, F#4, E4, D4, C4.

System 2 (Measures 5-10):
 Treble clef, 6/8 time. Notes: G4, A4, B4, A4, G4, F#4, E4, D4, C4. Ornaments: G4, A4, B4, A4, G4, F#4, E4, D4, C4.

System 3 (Measures 11-15):
 Treble clef, 6/8 time. Notes: G4, A4, B4, A4, G4, F#4, E4, D4, C4. Ornaments: G4, A4, B4, A4, G4, F#4, E4, D4, C4.

System 4 (Measures 16-21):
 Treble clef, 6/8 time. Notes: G4, A4, B4, A4, G4, F#4, E4, D4, C4. Ornaments: G4, A4, B4, A4, G4, F#4, E4, D4, C4.

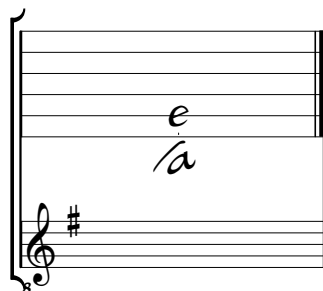
System 5 (Measures 22-26):
 Treble clef, 6/8 time. Notes: G4, A4, B4, A4, G4, F#4, E4, D4, C4. Ornaments: G4, A4, B4, A4, G4, F#4, E4, D4, C4.

System 6 (Measures 27-31):
 Treble clef, 6/8 time. Notes: G4, A4, B4, A4, G4, F#4, E4, D4, C4. Ornaments: G4, A4, B4, A4, G4, F#4, E4, D4, C4.

The score concludes with a decorative flourish on the right side of the final system.

Tonalité et accord du luth : Sol majeur

Scordature par octave



Accord des 11 chœurs du luth

