

[Compositeur anonyme]

Menuet Trio

Sol majeur et Sol mineur

Manuscrit d'Haslemere

Haslemere, Carl Dolmetsch Library

GB-HAdolmetsch ms II.B.2

Page 121

Sans correspondance.



Menuet.

Handwritten musical score for a Minuet. The score is written on a grand staff with a treble clef and a 3/4 time signature. It consists of four systems of music, each with a treble clef staff and a bass clef staff. The notes are written in a shorthand notation with letters 'a', 'e', 'r', and 'a' (representing G, C, F, and C respectively). The first system starts with a 3/4 time signature and a 3-measure rest. The second system starts with a 7-measure rest. The third system starts with a 15-measure rest. The fourth system starts with a 23-measure rest. The score ends with a double bar line and a decorative flourish.



Trio

Sol mineur

Handwritten musical notation for a Trio in G minor. The piece is in 3/4 time and consists of 24 measures. The notation includes rhythmic values (quarter, eighth, and sixteenth notes), rests, and various ornaments (accents, mordents, and grace notes). The key signature is one flat (Bb).

Measures 1-6: The first system contains six measures. It begins with a 3/4 time signature. The melody starts with a quarter note G, followed by eighth notes A and B, and a quarter note G. The bass line consists of quarter notes G, Bb, and G. Measure 6 ends with a repeat sign.

Measures 7-12: The second system contains six measures. It begins with a quarter note G, followed by a quarter rest, and a quarter note Bb. The melody continues with eighth notes A and B, and a quarter note G. The bass line consists of quarter notes G, Bb, and G. Measure 12 ends with a repeat sign.

Measures 13-19: The third system contains seven measures. It begins with a quarter note G, followed by eighth notes A and B, and a quarter note G. The melody continues with eighth notes A and B, and a quarter note G. The bass line consists of quarter notes G, Bb, and G. Measure 19 ends with a repeat sign.

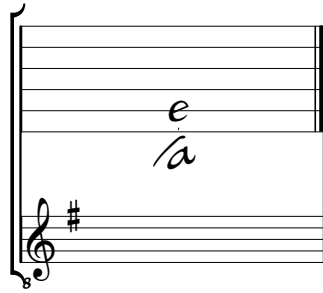
Measures 20-24: The fourth system contains five measures. It begins with a quarter note G, followed by eighth notes A and B, and a quarter note G. The melody continues with eighth notes A and B, and a quarter note G. The bass line consists of quarter notes G, Bb, and G. Measure 24 ends with a repeat sign.

At the end of the piece, there is a decorative flourish.

1. Tablature originale : l'indication rythmique est un triolet de croches.

Accord du luth : Sol majeur

Scordature par octave



Accord des 11 chœurs du luth

