

*Emons*

*Emond, Emmon, Edmon, Edmond,  
Ennemon, Aimon, Aymond, ou Hemond ?*

# Allemande Courante

Do majeur

**Manuscrit d'Haslemere GB-HAB2**

*Haslemere, Carl Dolmetsch Library*

GB-HAdolmetsch ms II.B.2

*Page 184*

*Sans correspondance.*



# Allemande. P[a]r Emons

Handwritten musical score for Allemande. The score is written on a grand staff (treble and bass clefs) and includes rhythmic notation above the notes. The piece is in C major and 4/4 time. The score is divided into measures, with measure numbers 4, 7, 10, 13, and 16 indicated. The notation includes various note values (quarter, eighth, sixteenth notes), rests, and accidentals. The piece concludes with a decorative flourish.

# Courante.

## P[a]r Emons

3/4

6

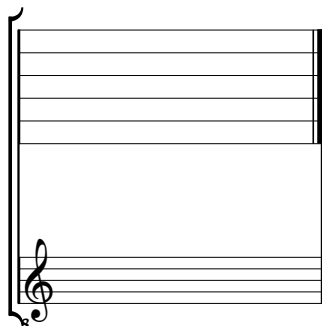
13

20

26

Tonalité : Do majeur.

*Scordature par octave*



*Accord ordinaire des 11 chœurs du luth*

