

***Johann Gottfried Conradi***  
(16?? - 1747)

# Sonate 2

Do majeur

## **Neue Lauten Stücke**

**als Preludes, Allemands, Courants, Giques, Menuets, etc.**

**Francfurt an der Oder, 1724 - Johann Gottfried Conradi**

*(Leipzig, Städtische Bibliotheken, Musikbibliothek)*

**D-LEm III.10.34**

*Pages 7 à 10*



# Neue Lauten Stücke

Frankfurt an der Oder, 1724 - Johann Gottfried Conradi

## Sonate 2 en Do majeur

### Prélude (Prelude)

Handwritten musical score for the Prelude of the Sonata 2 in C major. The score is written on a grand staff with five systems of two staves each. The time signature is common time (C). The key signature is one sharp (F#), indicating C major. The score includes various musical notations such as notes, rests, slurs, and dynamic markings (f, h). The piece begins with a treble clef and a common time signature. The first system shows the beginning of the piece with a treble clef and a common time signature. The second system starts with a measure number '2'. The third system starts with a measure number '3'. The fourth system starts with a measure number '4'. The fifth system starts with a measure number '5'. The sixth system starts with a measure number '7'. The seventh system starts with a measure number '9'. The score concludes with a final measure in the seventh system.

11

12

13

14 Harp:

17

19

21 Harp:

22

# Allemande

♩ ♩      ♩ ♩ ♩ ♩ ♩      ♩ ♩ ♩

3 ♩ ♩ ♩ ♩ ♩      ♩      ♩ ♩

5 ♩ ♩      ♩ ♩ ♩ ♩ ♩      ♩ ♩

7 ♩ ♩ ♩      ♩ ♩ ♩ ♩ ♩      ♩ ♩ ♩

9 ♩      ♩.      ♩ ♩ ♩ ♩      ♩

11 ♩      ♩      ♩ ♩      ♩ ♩

1. Original : quarter note without dot

13

15

17

19

21

23

# Courante

Handwritten musical score for Courante, featuring rhythmic notation above and fingerings below a five-line staff. The score is divided into measures, with measure numbers 4, 8, 12, 16, and 20 indicated on the left. The notation includes various rhythmic values (e.g., quarter notes, eighth notes, sixteenth notes) and dynamic markings (e.g., *f*, *ff*, *ffx*). Fingerings are indicated by numbers 1-4 and letters *a*, *r*, *e*, *f*, *h*, *k*. The piece concludes with a double bar line and repeat dots, followed by a first ending marked with an asterisk (\*).

1. Original: quarter note without dot

24

28

32

36





# Menuet

3

4

5

9

14

19

23

4

# Gigue

Handwritten musical notation for the first system of the Gigue. It consists of two staves. The top staff is in 6/8 time and contains three measures of music with notes and rests. The bottom staff contains notes and rests corresponding to the top staff. Above the first measure, there are two 'r' symbols. Above the second measure, there are two 'r' symbols. Above the third measure, there are two 'r' symbols.

Handwritten musical notation for the second system of the Gigue, starting at measure 4. It consists of two staves. The top staff contains five measures of music with notes and rests. The bottom staff contains notes and rests corresponding to the top staff. Above the first measure, there are two 'r' symbols. Above the second measure, there are two 'r' symbols. Above the third measure, there are two 'r' symbols. Above the fourth measure, there are two 'r' symbols. Above the fifth measure, there are two 'r' symbols. A '4' is written below the third measure.

Handwritten musical notation for the third system of the Gigue, starting at measure 9. It consists of two staves. The top staff contains four measures of music with notes and rests. The bottom staff contains notes and rests corresponding to the top staff. Above the first measure, there are two 'r' symbols. Above the second measure, there are two 'r' symbols. Above the third measure, there are two 'r' symbols. Above the fourth measure, there are two 'r' symbols. A '4' is written below the second measure.

Handwritten musical notation for the fourth system of the Gigue, starting at measure 13. It consists of two staves. The top staff contains four measures of music with notes and rests. The bottom staff contains notes and rests corresponding to the top staff. Above the first measure, there are two 'r' symbols. Above the second measure, there are two 'r' symbols. Above the third measure, there are two 'r' symbols. Above the fourth measure, there are two 'r' symbols.

Handwritten musical notation for the fifth system of the Gigue, starting at measure 17. It consists of two staves. The top staff contains four measures of music with notes and rests. The bottom staff contains notes and rests corresponding to the top staff. Above the first measure, there are two 'r' symbols. Above the second measure, there are two 'r' symbols. Above the third measure, there are two 'r' symbols. Above the fourth measure, there are two 'r' symbols.

Handwritten musical notation for the sixth system of the Gigue, starting at measure 21. It consists of two staves. The top staff contains four measures of music with notes and rests. The bottom staff contains notes and rests corresponding to the top staff. Above the first measure, there are two 'r' symbols. Above the second measure, there are two 'r' symbols. Above the third measure, there are two 'r' symbols. Above the fourth measure, there are two 'r' symbols. A '4' is written below the fourth measure.

26

3  
e

30

34

4

39

f

44

f

x

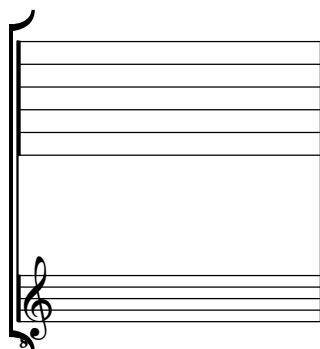
49

4

# Tonalité : Do majeur

*Accord ordinaire du luth*

*Scordature par octave*



*Accord des 11 chœurs du luth*

