

*Wolff Jacob Lauffensteiner*

(1676 - 1740)

[Trois pièces]  
del Sig.re Lauffensteiner

La majeur et mi majeur

Manuscrit de Munich  
Bayerische Staatsbibliothek

Ms 5362

(Folios 36r à 37r)

# Les pièces

- 1 - Menuet
- 2 - Sarabande
- 3 - Gay

# - Menuet

del Sig.re Lauffensteiner



8

First musical staff, measures 1-4. Treble clef, key signature of two sharps (F# and C#), 3/4 time signature. The melody consists of eighth and quarter notes, with a bass line of sustained octaves.



5

Second musical staff, measures 5-8. Continuation of the melody and bass line.



10

Third musical staff, measures 9-12. Continuation of the melody and bass line.



15

Fourth musical staff, measures 13-16. Continuation of the melody and bass line.



20

Fifth musical staff, measures 17-20. Continuation of the melody and bass line.



25

Sixth musical staff, measures 21-24. Continuation of the melody and bass line.



30

Seventh musical staff, measures 25-28. Continuation of the melody and bass line.



35

Eighth musical staff, measures 29-32. Continuation of the melody and bass line.



40

Ninth musical staff, measures 33-36. Continuation of the melody and bass line. A fermata is placed over the final note of the melody in measure 36, with the letter 'R' above it.

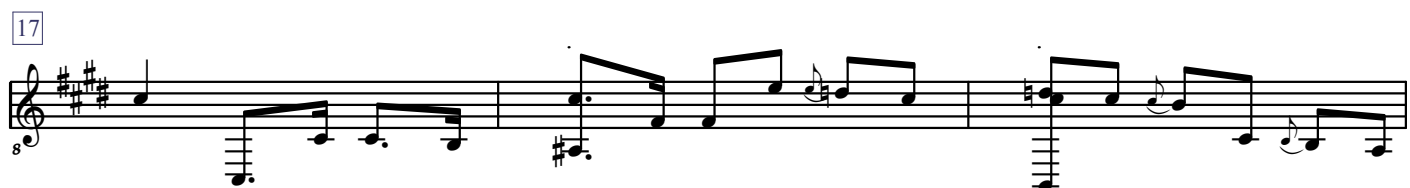


46

Tenth musical staff, measures 37-46. Continuation of the melody and bass line, ending with a double bar line and a repeat sign.

# - Sarabande

del Sig.re Lauffensteiner



# - Gay

du même

8

First musical staff, measures 1-4. Treble clef, key signature of two sharps (F# and C#), 2/4 time signature. The melody consists of eighth and sixteenth notes.

5

Second musical staff, measures 5-8. Treble clef, key signature of two sharps (F# and C#), 2/4 time signature. The melody continues with eighth and sixteenth notes.

9

Third musical staff, measures 9-12. Treble clef, key signature of two sharps (F# and C#), 2/4 time signature. The melody continues with eighth and sixteenth notes.

13

Fourth musical staff, measures 13-17. Treble clef, key signature of two sharps (F# and C#), 2/4 time signature. The melody continues with eighth and sixteenth notes, ending with a double bar line and repeat dots.

18

Fifth musical staff, measures 18-21. Treble clef, key signature of two sharps (F# and C#), 2/4 time signature. The melody continues with eighth and sixteenth notes.

22

Sixth musical staff, measures 22-25. Treble clef, key signature of two sharps (F# and C#), 2/4 time signature. The melody continues with eighth and sixteenth notes.

26

Seventh musical staff, measures 26-29. Treble clef, key signature of two sharps (F# and C#), 2/4 time signature. The melody continues with eighth and sixteenth notes. A *vib* (vibrato) marking is present above the second measure.

30

Eighth musical staff, measures 30-33. Treble clef, key signature of two sharps (F# and C#), 2/4 time signature. The melody continues with eighth and sixteenth notes.

34

Ninth musical staff, measures 34-37. Treble clef, key signature of two sharps (F# and C#), 2/4 time signature. The melody continues with eighth and sixteenth notes.

38

42

46

R

50