

Silvius Leopold Weiss

(1687 - 16 oct. 1750)

Arlequinade

WeissSW 92.8

Ré majeur

Manuscrit de Munich

München, Bayerische Staatsbibliothek, Musikabteilung

D-Mbs ms. Mus. 5362

Folio 34 r.

*Voir dans le manuscrit de Wroclaw 2002 PL-WRu, page 9, la Gavotte.
[WRu2]*

*Voir dans le manuscrit de Varsovie PL-Wu2004, folio 33 v., l'Allegro de
la Parthia ex D duro. [PLWu2004_8]*



Arlequinade

Musical score for "Arlequinade" in C major. The score is written on a single staff with a common time signature (C). The notation includes rhythmic values (quarter, eighth, and sixteenth notes) and rests. The notes are labeled with letters 'a', 'r', 'e', and 'b', representing the notes A, G, F, and E respectively. The score is divided into measures, with measure numbers 5, 10, 14, 20, and 25 indicated on the left. The notation includes various ornaments and slurs, and a repeat sign is present in measure 11.

31

a e^{\flat} a a^{\flat} a e^{\flat} a e a e^{\flat} a a^{\flat}
 a 6 (1*) a 6 a 6 a 6 a 6 (2*) a 6

37

a e^{\flat} a a r e a r e r e a a
 a 6 a $6/a$ a a 5 4 $//a$ $//a$ $/a$

43

r r e e a a r r e a r e
 a $/a$ $//a$ a a a/a a r a a r e r a e a $/a$ a a

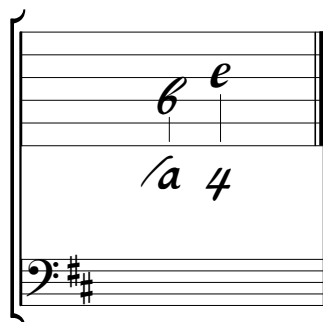
48

a e r a r b r a
 $//a$ 6 $//a$ 6 $//a$

1. Tablature originale : Sol bécarré (c sur la chanterelle)
 2. Tablature originale : Sol bécarré (c sur la chanterelle)

Tonalité et accord du luth : Ré majeur.

Scordature par octave



Accord des 13 chœurs du luth

A musical diagram for lute tuning. It consists of two staves. The top staff has seven notes: a, a, a, a, a, a, a. Below these notes are the letters 'a', 'a', 'a', 'a', 'a', 'a', 'a'. The bottom staff is a bass clef with a key signature of two sharps (F# and C#). The notes are: F#, C#, G, F#, C#, G, F#, C#, G, F#, C#, G, F#. Below the notes are the letters 'a', 'a', 'a', 'a', '4', '5', '6'.