

*Silvius Leopold Weiss*

(1687 - 16 oct. 1750)

# Gigue

WeissSW108.8

Fa majeur

Manuscrit de Munich

*München, Bayerische Staatsbibliothek, Musikabteilung*

D-Mbs ms. Mus. 5362

*Folio 50 v.*



# Gigue del Sig.re S.L. Weiß

The image displays a musical score for a Gigue by Silvius Leopold Weiss, presented in lute tablature. The score is organized into six systems, each containing five measures. The notation includes rhythmic values (such as 6/8, 4, and 8), note heads (a, e, r), and various lute-specific symbols like circles with dots and slurs. Fingerings are indicated by numbers 1-4. A repeat sign is present in the 15th measure. The score concludes with two footnotes: (1\*) and (2\*), both indicating missing liaisons from the original manuscript.

1. Liaison absente de la tablature originale.  
2. Liaison absente de la tablature originale.

30

ereera fhfh a h a a h a a f f e f r a r r a

/a //a //a a (1\*) 4

35

a a a r a a a a r a r a r r r r r r e e f f f e e

a b r 4 4

40

r r r a a a r r a a a a a b b a a a r a b b b a b

4 4 5 a a R/a a

45

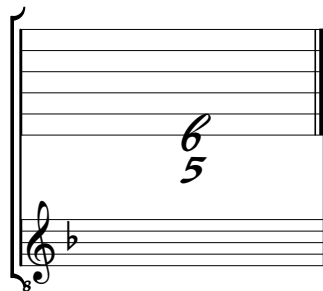
[a] a a a r a r a r a r e r a a r a a a

a (2\*) 5 4 //a //a /a 4 /a

1. Tablature originale : Sol (f sur le canto).  
 2. Tablature originale : Ré (a sur le canto).

# Tonalité et accord du luth : Fa majeur.

## *Scordatura par octave*



## *Accord des 12 chœurs du luth*

