

***Wolff Jacob Lauffensteiner***

(avril 1676 - 26 mars 1754)

# Aria

Sol mineur

**Manuscrit de Munich D-Mbs5362**

*München, Bayerische Staatsbibliothek, Musikabteilung*

**D-Mbs ms. Mus. 5362**

*Folios 53v. et 54r.*

*Sans correspondance.*



# Aria del Sig.re Lauffensteiner

Handwritten musical score for an Aria, featuring a single melodic line on a five-line staff. The notation includes various rhythmic values (e.g., minims, crotchets, quavers) and articulation marks (accents, slurs, trills). The score is divided into measures, with measure numbers 3, 5, 7, 9, and 11 indicated on the left. The key signature is one flat (B-flat), and the time signature is common time (C). The notation uses letters 'a', 'b', 'c', 'd', 'e', 'f', 'g' for notes and 'r' for rests. Some notes are decorated with trills or slurs. The score concludes with a double bar line and repeat dots.

3

5

7

9

11

13

Handwritten musical notation for measures 13-14. Measure 13: Treble clef, notes *f e f a e f f e e r e e r*. Bass clef, notes *a e a*. Measure 14: Treble clef, notes *r r r r r r r*. Bass clef, notes *r a e r a*.

15

Handwritten musical notation for measures 15-16. Measure 15: Treble clef, notes *a a a a a a a*. Bass clef, notes *a a a a a a a*. Measure 16: Treble clef, notes *a a b a r b b r a*. Bass clef, notes *a a 4 a a*.

17

Handwritten musical notation for measures 17-18. Measure 17: Treble clef, notes *a a a a a a a*. Bass clef, notes *a a a a a a a*. Measure 18: Treble clef, notes *a a a a a a a*. Bass clef, notes *a a a a a a a*.

19

Handwritten musical notation for measures 19-20. Measure 19: Treble clef, notes *r a b a b a b a a b a*. Bass clef, notes *r a a a a a a*. Measure 20: Treble clef, notes *a a a a a a a*. Bass clef, notes *a a a a a a a*.

21

Handwritten musical notation for measures 21-22. Measure 21: Treble clef, notes *r a b a b a r b a*. Bass clef, notes *a a a a a a a*. Measure 22: Treble clef, notes *a a a a a a a*. Bass clef, notes *a a a a a a a*.

23

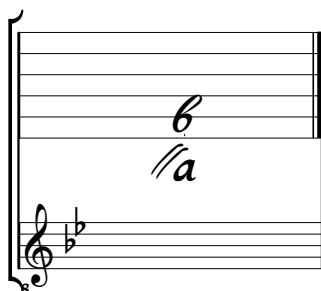
Handwritten musical notation for measures 23-24. Measure 23: Treble clef, notes *a a b a a a b a a b a*. Bass clef, notes *a a a a a a a*. Measure 24: Treble clef, notes *b a a b a a r a a r b r*. Bass clef, notes *a a a 4*.

25

Handwritten musical notation for measure 25. Treble clef, notes *b r b a r a r b b*. Bass clef, notes *a a a*. Ends with a double bar line and a decorative flourish.

Tonalité : Sol mineur.

*Scordature par octave*



*Accord des 11 chœurs du luth*

