

Silvius Leopold Weiss

(1687 - 16 oct. 1750)

Courante

del Sig.re S. L. Weiss

WeissSW33.3

Fa majeur

Manuscrits de Munich D-Mbs

München, Bayerische Staatsbibliothek, Musikabteilung

D-Mbs ms. Mus. 5362

Folio 6 r.

Voir dans le manuscrit de Londres GB-Lbl30387, page 4, la Courante de la Suite I. [WL01]

Voir dans le manuscrit de Dresde D-Dl2841, volume 1, pages 12, la Courante de la Sonate n° 1. [WD3]

Voir aussi toutes les variantes de cette Courante dans les différentes versions de la Suite WeissSW1.



Courante del Sig.re S. L. Weiss

The image displays a musical score for a Courante by Sigismond L. Weiss. The score is written on a single staff with a 3/4 time signature. It consists of six systems of music, each with a measure number on the left. The notation includes various rhythmic values (quarter, eighth, and sixteenth notes), rests, and ornaments. Fingerings are indicated by numbers 1-4. Some measures contain a circled 'a' or 'e', likely representing specific notes or ornaments. A double bar line with repeat dots appears in the 18th measure. A footnote at the bottom left indicates that the first bass line is absent from the original tablature.

3/4

6

12

18

24

30

(1*)

1. Basse absente de la tablature originale.

36

4

a a a a a a

42

a a a a a 4 a a a a

47

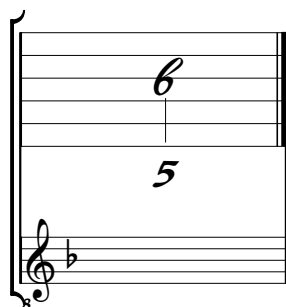
a a a a

a 4 a a



Tonalité et accord du luth : Fa majeur

Scordature par octave



Accord des 11 chœurs du luth

