

[Placide Marie Pichler]

(1725 - 1796)

[Paisan]

Ré majeur

Manuscrits de Varsovie

Warszawa, Biblioteka Uniwersytecka w Warszawie,

Gabinet Zbiorów Muzycznych

PL-Wu ms. RM 4136 (olim Ms. Mf. 2003)

Folio 38 v.

*Voir dans le manuscrit Harrach de New-York (US-NYp11), pages 75 à 77,
la Paisan de la Suite pour luth, violon et basse en Ré majeur. [HRV11_5]*

*Voir dans le manuscrit de Varsovie PL-Wu2010, page 93, la Paisan de la
Suite attribuée à Pichler. [PLWu2010_100]*



[Paisan]

Musical score for "Paisan" in C major, featuring a guitar tablature with a C-clef and various musical notations including notes, rests, and ornaments. The score is divided into systems with measure numbers 8, 15, 23, and 30.

System 1 (Measures 1-7):

- Measure 1: *e a*
- Measure 2: *e a*
- Measure 3: *e ar*
- Measure 4: *e ar a*
- Measure 5: *e a*
- Measure 6: *r a*
- Measure 7: *e [a]*

System 2 (Measures 8-14):

- Measure 8: *r ar*
- Measure 9: *e r ar a*
- Measure 10: *a*
- Measure 11: *e a*
- Measure 12: *e a*
- Measure 13: *e a*
- Measure 14: *r ar r*

System 3 (Measures 15-22):

- Measure 15: *f*
- Measure 16: *f*
- Measure 17: *f [r]*
- Measure 18: *e ar a*
- Measure 19: *e ea*
- Measure 20: *r r e*
- Measure 21: *e ea*
- Measure 22: *r r e*

System 4 (Measures 23-29):

- Measure 23: *e ar a*
- Measure 24: *e r a*
- Measure 25: *a a a*
- Measure 26: *r r r*
- Measure 27: *e e e*
- Measure 28: *a r a*
- Measure 29: *r e r*

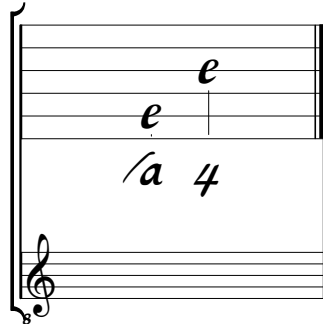
System 5 (Measures 30-36):

- Measure 30: *e r*
- Measure 31: *e a*
- Measure 32: *e a*
- Measure 33: *e ar*
- Measure 34: *e r a a e*
- Measure 35: *f*
- Measure 36: *a*

1. Tablature originale : présence d'un Mi (c sur le canto).
2. Mesure absente de la tablature originale.
3. Tablature originale : Ré (a sur le canto).
4. Mesure absente de la tablature originale.
5. Note absente de la tablature originale.
6. Mesure absente de la tablature originale.
7. Liaison absente de la tablature originale.

Accord du luth : Ré majeur.

Scordature par octave



Accord des 11 chœurs du luth

Musical notation for the 11-voice scordatura of a D major chord. It consists of two staves. The upper staff has 11 notes: 'a' on the first space, 'a' on the first space, 'a' on the first space, 'a' on the first space, 'a' on the first space, 'a' on the first space, 'a' on the first space, 'a' on the first space, 'a' on the first space, 'a' on the first space, and '4' on the first line. The lower staff has 11 notes: 'a' on the first space, 'a' on the first space, 'a' on the first space, 'a' on the first space, 'a' on the first space, 'a' on the first space, 'a' on the first space, 'a' on the first space, 'a' on the first space, 'a' on the first space, and '4' on the first line. A brace on the left side groups the two staves together.