

[Johann Kropffgans ?]
(1708 - 1770)

[6 pièces]

Sol majeur

Manuscrits de Varsovie
Warszawa, Biblioteka Uniwersytecka
PL-Wu ms. RM 4136 (olim Ms. Mf. 2003)

folios 46r. à 48r.

*Voir dans le manuscrit de Varsovie PL-Wu2005, folios 60 à 71, Pastorella,
Menuet et Trio des 11 pièces mises en sonate. [PLWu2005_20]*

Les pièces

Pastorella

[Menuet]

Trio

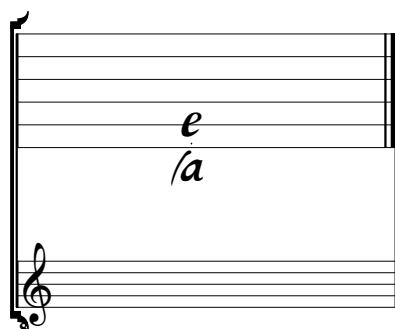
Menuet

[Pièce sans titre]

[Pièce sans titre]

Accord du luth : sol majeur

Scordatura par octave



Accord des 13 chœurs du luth



Pastorella

Handwritten musical notation for the first system of 'Pastorella'. It consists of a single staff with a common time signature (C). The notes are written in a shorthand style with various ornaments and slurs. Below the staff, the letter 'a' is written under several notes, indicating a specific pitch or articulation.

Handwritten musical notation for the second system, starting at measure 5. It features a single staff with notes and ornaments. The letter 'a' is written below the staff at several points, and there are double bar lines with repeat signs (//) under some notes.

Handwritten musical notation for the third system, starting at measure 11. The notation includes notes, ornaments, and slurs. The letter 'a' is written below the staff, and there are double bar lines with repeat signs (//) under some notes.

Handwritten musical notation for the fourth system, starting at measure 16. It shows notes, ornaments, and slurs. The letter 'a' is written below the staff, and there are double bar lines with repeat signs (//) under some notes.

Handwritten musical notation for the fifth system, starting at measure 22. This system includes notes, ornaments, and slurs, with the letters 'k' and 'i' appearing in the notation. The letter 'a' is written below the staff, and there are double bar lines with repeat signs (//) under some notes.

Handwritten musical notation for the sixth system, starting at measure 29. It features notes, ornaments, and slurs, with the letters 'k' and 'h' appearing. The letter 'a' is written below the staff, and there are double bar lines with repeat signs (//) under some notes.

37

g h g | h g h g | g h k | i g g i h | g h g h a | h g
a | *a* | *a* | *a* | *a* | *a*

43

h | e a a | ra r r | a r r a e r e | e e r a | a r r a
a a | *a a* | *a a* | *a a* | *a a* | *a a*

50

a a e | a | a a | a a r e a | a a r e | a
a a | *a a* | *a a* | *a a* | *a a* | *a a*

56

r a r a r b | a r | a a | a a | a a a | a a
a | *a* | *a* | *a* | *a* | *a*

62

a a | r r | a a | k a k | k h h h | k h k a
a | *a* | *a* | *a* | *R a* | *a*

69

k a | a | a | a a



[Menuet]

6

11

17

23

29

Trio

Mi mineur

Handwritten musical notation for measures 1-4. The first measure is marked with a '3' and a '3' time signature. The notation includes rhythmic symbols (♩, ♪, ♫) and fingerings (r, b, r, a, a/a). Below the staff are the letters 'lla', 'a', 'a/a', 'lla', 'a', 'a/a', 'lla', '6', '5', 'a'.

Handwritten musical notation for measures 5-9. The notation includes rhythmic symbols and fingerings (r, b, r, f, e, f, g, e, f, h, g, h). Below the staff are the letters 'a', 'a', 'a', 'a', 'a', 'lla', 'lla', 'lla', '4'.

Handwritten musical notation for measures 10-14. The notation includes rhythmic symbols and fingerings (g, e, g, e, r, e, f, a, F, a, f, a, r, a, r). Below the staff are the letters 'lla', 'lla', '4', '5', '4', '4', '5', '6', '5', '4', 'lla', 'a', '6', '6', 'r', '6'.

Handwritten musical notation for measures 15-19. The notation includes rhythmic symbols and fingerings (r, a, r, e, f, a, r, a, a, f, a, a, a, f, a, a, a, a, a, r, a). Below the staff are the letters 'a', 'a', 'a', 'e', 'e', 'f', 'la', 'la', 'a', 'a', 'a', 'a', 'r', 'a'.

Handwritten musical notation for measures 20-24. The notation includes rhythmic symbols and fingerings (r, a, r, e, r, e, r, r, b, r, r, b, r, r, b, r). Below the staff are the letters 'a', 'r', 'x', 'lla', 'a', 'a/a', 'lla', 'a', 'a/a', 'lla', 'lla', '4'.

Handwritten musical notation for measures 25-29. The notation includes rhythmic symbols and fingerings (e, r, e, h, g, h, g, f, a, F, r, a, a, r, x). Below the staff are the letters '5', 'lla', 'a', 'a', '4', '6', '5', 'r', 'x'.



Menuet

3

1 2 3 4 5

6

1 2 3 4 5

12

1 2 3 4 5

18

1 2 3 4 5

24

1 2 3 4 5

30

1 2 3 4 5

37

f g e f k e f a a r r a r m mk l k l

a $||a$ 4 5 a a a $||a$ a R 4 5 6

44

k kh k kh h h k kh kh kh l k l

5 6 a a a a $||a$ a



[Pièce
sans titre]

2

a a 5 4 a a a a

6

a a a a a 5 4 a a a a 5

13

[Fin]

a a a 5 4 a a 6 a a

20

a a 5 a 6 a 5 a a a a a a

28

a a a a a a r a e a r e 6

35

5 a e a e a e

43

a a e a a e a e a a a a a a a

52

a (1*) a a (2*) a a a a a a

1. Tablature originale : do dièse (i sur la chanterelle).
2. Tablature originale : ré (n sur le canto).

Da Capo

[Pièce sans titre]

Sol mineur

2/4

f e f e f e e f a g f a a a e a a b a a

a ||a a la a la ||a ||a

6

[Fin] i h i h k h h i h i

||a ||a a r b a

11

f a a f a a f a a f a a a b a b a e a r a a

a a a a a b a ||a (*)

18

a r a r r a r a r r r b r b

4 e a a

Da Capo



1. Tablature originale : le rythme indiqué est une croche sur le premier temps de cette mesure et une noire sur le dernier de la mesure suivante.