

[Johann Kropffgans ?]
(1708 - 1770)

[8 pièces
mises en sonate]

Sol majeur

Manuscrits de Varsovie
Warszawa, Biblioteka Uniwersytecka
PL-Wu ms. RM 4136 (olim Ms. Mf. 2003)

folios 48v. à 53r.

Voir dans le manuscrit de Varsovie PL-Wu2005, folios 60 à 71, les 11 pièces mises en sonate. [PLWu2005_20]

Les pièces

Intrada

Gig

Pastorella

Scherzo

[Pièce sans titre]

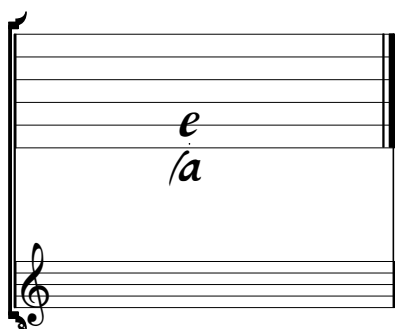
[Menuet]

[Pièce sans titre]

Presto

Tonalité et accord du luth : sol majeur

Scordatura par octave



Accord des 13 chœurs du luth



Intrada

r J r m r m r m

r m r m r m r m r m r m r J r

m m m m m m m m m m m m m m m m m

m J m m

r m J r J r m r

m r m r m r m r m r m r m r

18

r b r e r e r e r e r e^a e r b r b r b r b r a r a r a a a a a a a a a a

21

r r r r r r r r r r r r r b r e r e e r e r

a a a a a a a a a a a a a a a a 5

25

r b r r e r e e e x r a f e f g e f e h g h a

a a a a a a a a a a a a a a a a

28

f e f g e f e h g h a r r e r e e f e f f e g e e g h

a a a 4 5 4 a a a a a a a a a a

31

g g e f e f a r a a a a a a a a r a a a a a a a

a a a a a a a a a a a a a a a a

34

k k k k h k h h h g h f g f f e f e e e f

a a a a a a a a a a a a a a a a a a a a

37

r r a r r r r r r r r r r a r a r b r a

a a a a a a a a a a a a a a a a



Gig

r m r m r J m r m r

m r m r m r m r m r m r m r

m m m

m r r m r m r m

r m r m r m J r m r m r J

m m r m

21

24

27

31

34

37

41



Pastorella

3

3
r a b r e r a r d a r r r a b r e r a r d a r r g f e g h g
a a a a a a a

6

g f e e f f g f e g h g f g f e e f f g e f f e h h e r e e r a g
a a a a a

11

F e r r a e e e a a r a a r a F a a r a a r a e a a r a a r a F a a r a a r a
a a e a a e

16

F r e f e r e f h f F r e f e r e f h f e r e e r a e r a
a a a a a a a a a

21

e r e e r a e r a e r e e r a e f f e f h f e r e f e
a a a a a a a a a a a

26

k i k k i k i k x k k k i k k h h h i h h h i i g i i i g i
a a a 5 a a a a

32

g geg g geg e ede e ere r rgr
ff f e e e e e e r r r r r r
 a //a a //a //a

37

r rbr 6 g fgig g fgig r e 6 r
aa a *aaar* r r_x //a a a //a a a //a //a a r_x

44

r brer a r r r r r g f eghg g f e e f f
 a a a a a a

50

a r r r r r e a a r a a r r r r r r
 5 4 e a

55

r r r r r h f f h f f h f h f f h f f h f f h f
 r //a a //a a

60

h eghg e e f h f h eghg e e f h f a r r r a r b r a a r r r a r b r a
 //a a 4 5 //a a 4 5 5 4 //a 5 4 //a

66

a r r r a r 6 a f
 5 4 //a a



Scherzo

2 4

f 9 a r r a r a r a f e r e f r a e g

7

f r a r a f e r e e g f e f e g f e f e g f e

14

f a e a r a r a r a f r e e f g g g g g g g

23

r r a a e r e r r f r r f g a r r g a r a r r a

31

g e r e f g r e r g g e f e f h g h g e f e f e h f e f

37

g r a r b r b a r r a r a r a r a r a r a r a



[Pièce sans titre]

Handwritten musical notation for the first system, measures 1-6. The notation includes rhythmic markings (♩, ♪, ♫, ♮) and fingerings (r, f, g, h, k, l, m). The notes are primarily 'a' and 'e' on a five-line staff. A common time signature 'C' is present at the beginning. The bottom line of the staff shows the letter 'a' repeated under the notes.

Handwritten musical notation for the second system, measures 7-16. It continues the melodic line with various rhythmic values and fingerings. A double bar line with repeat dots is used at measure 15. The bottom line shows 'a' and 'b' under the notes.

Handwritten musical notation for the third system, measures 17-20. It features a sequence of notes with rhythmic markings. A measure rest of 5 is indicated at measure 18. A first ending bracket labeled '(1*)' spans measures 19-20. The bottom line shows 'a' and 'b' under the notes.

Handwritten musical notation for the fourth system, measures 21-25. The notation includes complex rhythmic patterns and fingerings. The bottom line shows 'a' and 'e' under the notes.

Handwritten musical notation for the fifth system, measures 26-29. It continues the piece with various rhythmic values and fingerings. The bottom line shows 'a' and 'b' under the notes.

Handwritten musical notation for the sixth system, measures 30-34. The notation includes complex rhythmic patterns and fingerings. The bottom line shows 'a' and 'b' under the notes. The system concludes with a double bar line and repeat dots.



1. Tablature originale : fa (a sur le 4ème chœur).

[Menuet]

3

3

3

3

3

3

3

7

3

3

3

3

3

3

13

5

4

3

3

3

3

19

3

3

3

3

3

3

25

Fine

3

3

3

3

3

3

32

3

3

3

3

3

3

40

47

54

59

63

Da Capo



[Pièce sans titre]

1. Note absente de la tablature originale.
2. Note absente de la tablature originale.

18

a a a a a e e e e e e e e e

21

5 a a a a a e e e e e e e e e

(1*)

24

a a a a a e e e e e e e e e

27

4 a a a a a e e e e e e e e e

30

5 5 a a a a e e e e e e e e e

33

a a a a a e e e e e e e e e

36

a a a a a e e e e e e e e e



1. Tablature originale : do dièse (e sur le 3ème chœur).

Presto

Handwritten musical notation for measures 1-3. The first measure contains notes *r a r a r* with a slur over *a r a r* and a fermata over the final *r*. The second measure contains *r a r b r*. The third measure contains *r a r a r b r b r a r b r a* with a slur over *a r b r b r a r b r a*. Below the staff, the letter *a* appears under the first and second measures.

Handwritten musical notation for measures 4-6. Measure 4: *e a a e e r e a e r e a*. Measure 5: *g a a g g e g a g e g a*. Measure 6: *h a a h h g h a h g h a*. Below the staff, the letter *a* appears under each measure.

Handwritten musical notation for measures 7-9. Measure 7: *k h k h l k k*. Measure 8: *m m l m m l m*. Measure 9: *k k k l k k k k k l k k*. Below the staff, the numbers 5, 4, 4, 4, 5, 5 are written under the respective notes.

Handwritten musical notation for measures 10-12. Measure 10: *h h k h h k h k*. Measure 11: *g f g f g f h f*. Measure 12: *e f e f e f e f e f*. Below the staff, the letter *a* appears under each measure.

Handwritten musical notation for measures 13-15. Measure 13: *f a e f a e a f a e a f a*. Measure 14: *f a e f a e a f a e a f a*. Measure 15: *a a a a a a a a*. Below the staff, the letter *a* appears under each measure.

Handwritten musical notation for measures 16-18. Measure 16: *a a a a a e f*. Measure 17: *a a a a a a a a*. Measure 18: *a a a a a e f*. Below the staff, the letter *a* appears under each measure.

Handwritten musical notation for measures 19-21. Measure 19: *a a r a a b r b*. Measure 20: *a a r a e a*. Measure 21: *a r b r a r a r a r a*. Below the staff, the letter *a* appears under each measure.

22 m m f

$r r a r r a r r a r a r a$ | $a r a a r a r r a r$ | $g a a r g a a r$

$\text{||}a \text{||}a$ $a a a a$ $a a a a$

25 f m j d f f m j f m m

$r a r a r a x$ | $g a a r g a a r$ | $b a r a r a r a f e f$ | $f e f f e f f f r f f$

4 a $a a a a$ 4 a 4 4

29 m m m

$e r e e r e a e e$ | $r a r r a r r a r r r$ | $a r a a r a r a r$

$a a$ $a a$ $a a a a$

32 f f f m m f m m f f f m m f m m f

$f e a a r a r$ | $r a a r r b r$ | $r r b e e r g$ | $h f h e h g f e g e r e$

$a a a$ 5 5 5 $\text{||}a$ $a 4$ a

36 m m f m m f f m f j f

$e e r b r$ | $r r r r r$ | $r r r r r r r b$ | $r e r b r$ | $r r r$ | $r a r a r$ | $r a r$

5 $\text{||}a a a r a$ $a a r a$ $a a r$ $\text{||}a$ 5 $\text{||}a$ a a

40 f m j f m f m f m

$r a r b r$ | $r a r a r b r b r a$ | $e a a e e r e a e r e$ | $a g a a g g e g a g e g a$

$a a$ $a a$ $a a$ $a a$ $a a$ $a a$

44 f m m

$h a a h h a a h$ | $h a e a h a e a g a f a g a f a$ | $h a e a h a e a g a f a g a f a$

a a $\text{||}a$ $\text{||}a$ $\text{||}a$ $\text{||}a$

47 m m m m j

$r r r r r r r r$ | $r r r r r r b r$ | $\text{||}||$

R 5 4 $\text{||}a \text{||}a \text{||}a \text{||}a$ $a a$ 5 4 $\text{||}a \text{||}a$ 4 $\text{||}a$

