

[Johann Georg Weichenberger ?]

(1676 - 1740)

[6 pièces]

Ré mineur et Fa majeur

Manuscrits de Varsovie

Warszawa, Biblioteka Uniwersytecka

PL-Wu ms. RM 4137 (olim Ms. Mf. 2004)

Folios 45 v. à 46 v.

*Voir dans le manuscrit de Wroclaw PL-WRu, page 23, la Bourée de la Parthia
ex F. [WRu8]*

Les pièces

Menuet

Air et Double

Menuet et Double

Bourée

Menuet

Menuet

Menuet

3

6

12

18

1. Liaison absente de la tablature originale.

Air

Musical score for 'Air'. The score is written on two staves. The first staff begins with a common time signature 'C'. The notation includes various rhythmic values (quarter, eighth, sixteenth notes) and rests. The notes are labeled with letters 'a', 'e', 'r', and 'y'. There are several slurs and accents. The second staff starts with a measure number '5'. It continues the melodic line with similar notation. The piece concludes with a double bar line and a decorative flourish.

Double

Musical score for 'Double'. The score is written on two staves. The first staff begins with a common time signature 'C'. The notation includes various rhythmic values and rests. The notes are labeled with letters 'a', 'e', 'r', and 'y'. There are several slurs and accents. The second staff starts with a measure number '5'. It continues the melodic line with similar notation. The piece concludes with a double bar line and a decorative flourish.

Menuet

3

8

Double

3

(1*)

6

13

1. Ornement absent de la tablature originale.

Bourée

Musical score for Bourée, featuring a single staff with rhythmic notation and tablature. The score is divided into systems of five measures each, with measure numbers 6, 12, 18, 24, and 30. The notation includes rhythmic flags, stems, and various tablature symbols such as 'a', 'b', 'r', and '4'. A repeat sign is present at measure 12, and a decorative flourish ends the piece at measure 30.

1. Liaison absente de la tablature originale.

Menuet

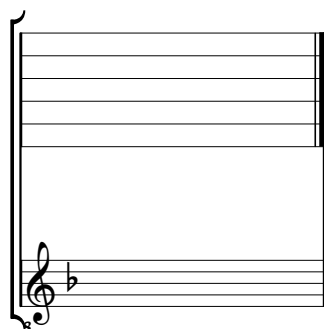
Handwritten musical notation for a Minuet in G minor, featuring rhythmic notation above a staff and letter-based tablature below. The piece is in 3/4 time and consists of 24 measures. The notation includes various rhythmic values (quarter, eighth, sixteenth notes), rests, and accidentals. The tablature uses letters 'a', 'b', 'c', 'd', 'e', 'f', 'g' to represent fret positions. A 3-measure rest is indicated at the beginning. A repeat sign with first and second endings is used at measures 10-11. A final cadence is shown at the end of measure 24.

1. Tablature originale : Sol (a sur le 7ème chœur).

2. Liaison absente de la tablature originale.

Tonalités : Ré mineur et Fa majeur.

Scordature par octave



Accord ordinaire des 11 chœurs du luth

