

Wolfgang Adam Anton von Hoffer

(vers 1707 à Vienne, 1757 à Mayence)

[Suite 2]
de Mr: Hoffer

[ré mineur et ré majeur]

Manuscrits de Vienne

National Bibliothek Wien

V18829

Folios 89 à 96

Les pièces de la suite

- 1 - Prelude de Mr. Hoffer
- 2 - Affectuoso
- 3 - Arlechinada allegro
- 4 - Menuet
- 5 - Trio

Wolfgang Adam Anton von Hoffer

(né à Vienne vers 1707, mort à Mayence en 1757)

Wolfgang Adam Anton von Hoffer fut luthiste au service des princes-archevêques, à la cour de l'Électorat de Mayence.

On le trouve (vers 1737, en particulier) auprès du prince-archevêque Philippe Karl von Eltz, ami et protecteur des sciences et des arts (de la musique, en particulier : quelques années plus tôt, il avait été chef de chœur de la cathédrale de Mayence !).

Wolfgang Adam Anton von Hoffer servit ensuite à la cour du prince-archevêque Johann Friedrich Karl von Ostein, despote éclairé inspiré par la philosophie des Lumières.

- Prelude de Mr. Hoffer

8

First musical staff, starting with a treble clef, a key signature of one flat (B-flat), and a common time signature. The staff contains a sequence of eighth and sixteenth notes, including a sharp sign (#) on the second measure.

2

Second musical staff, starting with a treble clef, a key signature of one flat, and a common time signature. It features a sequence of eighth and sixteenth notes with various accidentals, including a sharp sign (#) on the second measure.

3

Third musical staff, starting with a treble clef, a key signature of one flat, and a common time signature. It features a sequence of eighth and sixteenth notes with various accidentals, including a sharp sign (#) on the second measure.

5

Fourth musical staff, starting with a treble clef, a key signature of one flat, and a common time signature. It features a sequence of eighth and sixteenth notes with various accidentals, including a sharp sign (#) on the second measure.

6

Fifth musical staff, starting with a treble clef, a key signature of one flat, and a common time signature. It features a sequence of eighth and sixteenth notes with various accidentals, including a sharp sign (#) on the second measure.

7

Sixth musical staff, starting with a treble clef, a key signature of one flat, and a common time signature. It features a sequence of eighth and sixteenth notes with various accidentals, including a sharp sign (#) on the second measure. The staff ends with a double bar line and a fermata symbol.

- Affectuoso

6

11

14 *vib.*

19

24

28

33

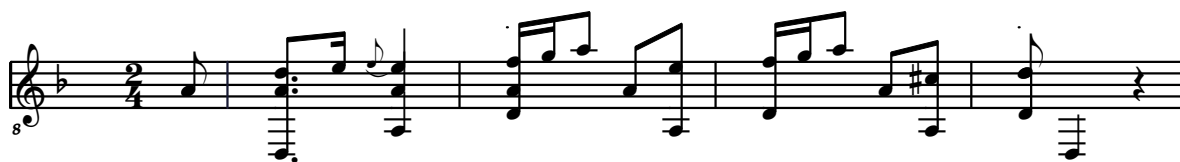
38

42

47

51

- Arlechinada allegro



5



9



13



17



20



24



29



33



37



pia:

fort:

41

8

pia:

45

8

48

8

52

8

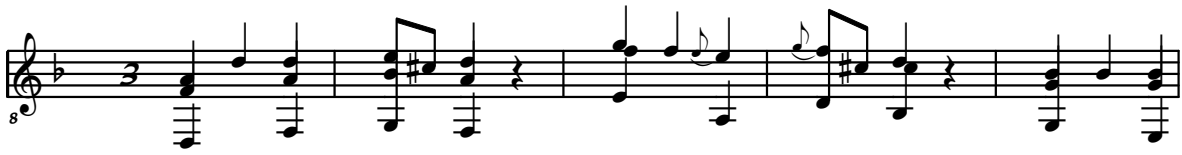
56

8

60

8

- Menuet



- Trio

8 

pia:

7 

for:

pia:

13 

fort:

19 

25 

31 

36 