

Johann Ferdinand Wilhelm, Graf von Bergen
(1678 - 1766)

[Suite 2]
du comte Bergen

La mineur

Manuscrits de Vienne

Wien, Österreichische Nationalbibliothek, Musiksammlung

A-Wn ms. Suppl. Mus. 1078

Pages 33 à 40 (folios 19 v. à 23 r.)

Pas de correspondance.



Les pièces de la Suite

Allemande du Comte Bergen

Courante

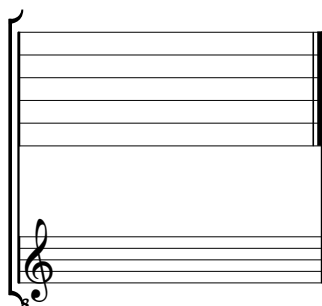
Menuet

La tournée

Gigue

Tonalité et accord du luth : La mineur.

Pas de scordature par octave



Accord ordinaire des 11 chœurs du luth



Allemande du Comte Bergen

Handwritten musical score for the Allemande du Comte Bergen, featuring rhythmic notation (letters and numbers) above and below a single staff.

Measures 1-2: *m m r m r m r*
C reg *hgh hgh hgh*
a g a g a g

Measures 3-5: *m r m r m r m r m m m r*
a r a r e g a *a g r a g r a r* *a g e g r a g e g*
a r a a r a a a

Measures 6-7: *m m r m r m r m*
a g e a r r r g *e a a r a r e* *a g a g*
a a 4 a a a a 4

Measures 8-10: *m m m r m r*
r g r a r a e r a g a g *a g e r e r g r*
4 a r

Measures 11-13: *m r m r m r m r m*
g g r r g g g r e r *r e r g r r* *a r a r a r a r*
r r r 6 r a r a r a

Measures 14-16: *r m r m r*
a g r a g e *r r g r e g a g* *a r e g*
a R a a a



Courante

3

4

9

15

20

25

30

1. Liaison absente de la tablature originale.

Menuet

3

5

11

18

24

R (1*)

1. Tablature originale : pas d'indication rythmique.

La tournée

$\text{J} \quad \text{r} \quad \text{m} \quad \text{r} \quad \text{m} \quad \text{r} \quad \text{r} \quad \text{m} \quad \text{m} \quad \text{r}$

6 $\text{r} \quad \text{m} \quad \text{r} \quad \text{r} \quad \text{m} \quad \text{m} \quad \text{J} \quad \text{r} \quad \text{m} \quad \text{r} \quad \text{m}$

12 $\text{r} \quad \text{m} \quad \text{r} \quad \text{m} \quad \text{r} \quad \text{m} \quad \text{r} \quad \text{m} \quad \text{J} \quad \text{m} \quad \text{r} \quad \text{m} \quad \text{J}$

17 $\text{m} \quad \text{r} \quad \text{m} \quad \text{m} \quad \text{J} \quad \text{m} \quad \text{r} \quad \text{m} \quad \text{J} \quad \text{m} \quad \text{r}$

22 $\text{J} \quad \text{r} \quad \text{m} \quad \text{r} \quad \text{m} \quad \text{r} \quad \text{m} \quad \text{r} \quad \text{m} \quad \text{r} \quad \text{m} \quad \text{r} \quad \text{m}$

28 $\text{J} \quad \text{m} \quad \text{r} \quad \text{m} \quad \text{r} \quad \text{m} \quad \text{J}$

1. Liaison absente de la tablature originale.
 2. Liaison absente de la tablature originale.
 3. Tablature originale : la liaison est sous l'intervalle précédent.

Gigue

Handwritten musical notation for a Gigue, consisting of five systems of staves. The notation includes rhythmic values (e.g., 6/8, 8), notes (e.g., r, a, e, b), and various musical symbols (e.g., slurs, accents, repeat signs). The piece concludes with a decorative floral ornament.

System 1: $\frac{6}{8}$ time signature. Notes: $r e \grave{a}$, $e \grave{a} e$, $r a r$, $\grave{a} r \grave{a} a$, r , $a r a$, $r a r$, $r a r$, $\grave{a} \grave{a}$, a . Bass line: a , b , \grave{a} , a , \grave{a} , a , r , \grave{a} , a .

System 5: Notes: a , \grave{a} , a , $r r r$, $\grave{a} r \grave{a}$, a , $[a]$, a , $r a r$, r , r , $r a$, $r a$, $\grave{a} \grave{a}$, a , r , \grave{a} . Bass line: a , a , \grave{a} , a , \grave{a} , a , r , \grave{a} , \grave{a} , a , \grave{a} , \grave{a} , \grave{a} , \grave{a} , \grave{a} , \grave{a} . Marked with (1*) and a 4-measure rest.

System 10: Notes: $r a$, e , $a r$, a , e , r , r , a , $r a$, a , \grave{a} , $r \grave{a}$, a , a , r , $r a r$, \grave{a} , a , r . Bass line: a , e , a , b , a , r , \grave{a} , r , \grave{a} , a . Marked with [6] and (2*).

System 15: Notes: $a r$, $\grave{a} r \grave{a}$, a , \grave{a} , $r \grave{b}$, a , e , a , $\grave{a} r$, $r \grave{b}$, a , e . Bass line: r , a , b , \grave{a} , \grave{a} , R , \grave{a} , \grave{a} , \grave{a} , \grave{a} , \grave{a} .

System 20: Notes: a , \grave{a} , $r r a$, $\grave{a} r a r$, $e \grave{a}$, e , a . Bass line: r , \grave{a} , b , a , \grave{a} , $a r$, a . Ends with a decorative floral ornament.

1. Tablature originale : Ré (a sur le canto).
 2. Tablature originale : Si bémol (b sur le 6ème chœur).