

***Giuseppe Borsilli***  
***(Joseph Porsile)***  
(1672 - 1750)

[Suite]

Sol mineur

**Manuscrits de Vienne**  
National Bibliothek Wien  
A-Wn ms. Suppl. Mus. 1078  
*folios 55 à 62 (30v. à 34r.)*

*Voir le manuscrit de Varsovie PL-Wu2003, folios 90r. à 91v., la Suite.*  
*[PLWu2003\_52]*

# *Les pièces de la suite*

*Allemande de G Borsilli*

*Courante*

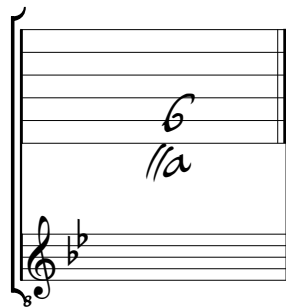
*Sarabande*

*Menuet*

*Gigue*

# Tonalité et accord du luth : sol mineur

*Scordatura par octave*



*Accord des 11 chœurs du luth*



# Allemande de G Borsilli

m r m r m r
m r m r
m r m r

3
3

C

(1\*)

1. Tablature originale : fa dièse (b sur le 4ème chœur).

# Courante

3

5

11

17

22

28

33

39

44

1. Tablature originale : si naturel (c sur le 3ème chœur).  
 2. Tablature originale : do (d sur le 3ème chœur).

# Sarabande

♪ ♩ ♩ ♩ ♩ ♩ ♩ ♩ ♩ ♩ ♩ ♩

5 ♩ ♩ ♩ ♩ ♩ ♩ ♩ ♩ ♩ ♩ ♩

11 ♩ ♩ ♩ ♩ ♩ ♩ ♩ ♩ ♩ ♩ ♩

18 ♩ ♩ ♩ ♩ ♩ ♩ ♩ ♩ ♩ ♩ ♩

25 ♩ ♩ ♩ ♩ ♩ ♩ ♩ ♩ ♩ ♩ ♩



# Menuet

Handwritten musical score for a Minuet in G minor, 3/4 time signature. The score is written on a grand staff with treble and bass clefs. It consists of 40 measures, divided into eight systems of five measures each. The notation includes various rhythmic values (quarter, eighth, sixteenth notes), rests, and dynamic markings such as *ff*, *f*, and *ff*. There are also performance instructions like *4* and *4* (triplets) and repeat signs. The piece concludes with a double bar line and repeat dots.

6

12

19

25

31

39



# Gigue

Handwritten musical score for a piece titled "Gigue". The score is written on a grand staff (treble and bass clefs) and consists of 32 measures. The time signature is 6/8, with a 4-measure section starting at measure 10. The notation includes various rhythmic values (quarter, eighth, sixteenth notes), rests, and dynamic markings such as *f* and *ff*. The piece concludes with a double bar line and repeat dots. A decorative floral ornament is located at the bottom right of the page.