

Johann Michael Kühnel

(autour de 1665 - après 1730)

Parthia

Auth[entique] M. Künel

Si bémol majeur

Manuscrit de Wrocław PL-WRu

Biblioteka Uniwersytecka we Wrocławiu

Oddział Zbiorów Muzycznych

PL-WRu 60019 Muz. (olim Mf. 2002)

Pages 55 à 57

*Voir dans le manuscrit de Brno CZ-Bm372, pages 34 à 37, la Courent.
[CZBm372_47]*

*Voir dans le manuscrit de Vienne A-W18829, pages 5 à 14 (folios 2v. à 7r.),
La Courante et le Menuet de la Suite. [V18829_1b]*



Les pièces de la Parthia

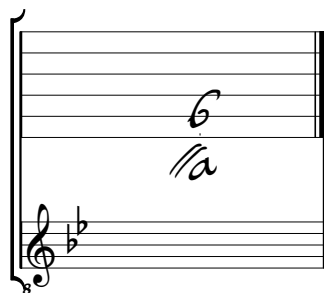
Allemande

Courante

Menuet

Tonalité : Si bémol majeur.

Scordature par octave



Accord des 11 chœurs du luth

A musical staff with a treble clef and a key signature of one flat (B-flat). The staff contains a sequence of notes: a whole note 'a' on the first space, followed by a half note 'a' on the first space, a quarter note 'a' on the first space, a quarter note 'a' on the first space, a quarter note 'a' on the first space, a quarter note 'a' on the first space, a quarter note 'a' on the first space, a quarter note 'a' on the first space, a quarter note 'a' on the first space, a quarter note 'a' on the first space, and a quarter note 'a' on the first space. The notes are written in a sequence that suggests a descending scale. The staff is labeled with 'a' above the notes and 'a l a l l a 4' below the notes.

Parthia Auth[entique] M. Künel

Allemande

1. *m m j 7 m*
6 6 | *6 6 a b a a 6 a f a f a* | *6 2 a a 2 6 a a r a 2 a*
a | *a 2 a*

3. *m* | *6 2 a r 2 6 a a a 2 a 2* | *3 3 3 3 3 3 m m m*
a 4 a | *e f h e f h 2 e 2 a b 2 a b 2 a a*
a | *a a*

5. *m* | *a 6 a a a 6 a r 2 r 6 r 2 r* | *m*
a | *a* | *a* | *a*
e f e 2 e f e f h f f f h f

7. *m* | *h i h h h i h* | *m*
a | *i k i i k i k [l]* | *h h i h h [h] k*
f f f f f h f h

9. *m* | *e e a a a a* | *3 3 3 3 3 3 j.*
2 2 2 2 a a b 2 a b 2 | *a a a 2*
a | *a b 2 a b 2*

1. Tablature originale : Do dièse (i sur la chanterelle).
 2. Deux notes, absentes de la tablature originale, ont été reconstituées.

10

5

4 [a] (*)

13

a

15

(2*)

17

(3*)

19

1. Tablature originale : Sol (a sur le 7ème chœur).
2. Deux notes, absentes de la tablature originale, ont été reconstituées.
3. Tablature originale : Sol dièse (d sur le 4ème chœur).

Courante

The image shows a handwritten musical score for a piece titled "Courante". The notation is a form of rhythmic shorthand, with rhythmic values indicated by letters above the staff and specific notes indicated by letters below. The score is organized into systems, with measure numbers 4, 10, 15, 20, and 26 marking the beginning of each system. The notation includes various rhythmic values such as 3, 4, and 6, and notes like 'a', 'r', 'g', 'e', 'h', 'f'. There are also some markings that look like '3' above groups of notes, possibly indicating triplets. The overall style is that of a personal manuscript or a working draft.

31

Handwritten musical notation for measures 31-34. The top staff contains notes with slurs and accents. The bottom staff contains rhythmic notation with letters 'a', 'e', 'r', 'h', 'f' and a '4' indicating a measure rest.

35

Handwritten musical notation for measures 35-40. The top staff contains notes with slurs and accents. The bottom staff contains rhythmic notation with letters 'a', 'g', 'f', 'e', 'r', 'a', 'b', 'a'.

41

Handwritten musical notation for measures 41-45. The top staff contains notes with slurs and accents. The bottom staff contains rhythmic notation with letters 'a', 'e', 'a', 'r', 'e', 'a', 'a', 'a', 'r', 'b', 'r', 'a'.

46

Handwritten musical notation for measures 46-48. The top staff contains notes with slurs and accents. The bottom staff contains rhythmic notation with letters 'a', 'a', 'a', 'a', 'a'.



Menuet ^(1*)

3

6

13

20

26

33

Da Capo

1. Dans le manuscrit original, une main anonyme a porté la mention : [Weiss SL]. Cette attribution est erronée.