

[Compositeur anonyme]

Gigue

Sol mineur

Manuscrit de Wrocław PL-WRu

Biblioteka Uniwersytecka we Wrocławiu

Oddział Zbiorów Muzycznych

PL-WRu 60019 Muz. (olim Mf. 2002)

Page 60

*Voir dans le manuscrit de Varsovie PL-Wu2010, page 17, la Gigue.
[PLWu2010_19]*



Gique

Musical score for "Gique" in 6/8 time. The score consists of five systems of music, each with a rhythmic notation above the staff and a staff with notes and rests below.

System 1: Rhythmic notation: ♩ ♩ ♩ ♩ ♩ ♩ ♩ ♩ ♩ ♩ ♩ ♩. Staff notes: $\frac{6}{8}$ \underline{ra} | $\underline{6\partial a}$ \underline{a} | \underline{a} \underline{a} | $\underline{6\partial 6a}$ \underline{r} | $\underline{6ra}$ \underline{a} .

System 2 (measures 5-8): Rhythmic notation: ♩ ♩ ♩ ♩ ♩ ♩ ♩ ♩ ♩ ♩ ♩ ♩. Staff notes: $\underline{6\partial a}$ \underline{r} | \underline{a} \underline{a} | $\underline{6\partial 6a}$ \underline{ra} | \underline{r} | $\underline{6\partial}$ $\underline{a6a}$ $\underline{6a}$.

System 3 (measures 9-12): Rhythmic notation: ♩ ♩ ♩ ♩ ♩ ♩ ♩ ♩ ♩ ♩ ♩ ♩. Staff notes: \underline{a} \underline{a} | $\underline{f\partial f\partial f\partial f\partial}$ | $\underline{f\partial f\partial}$ | \underline{araafa} \underline{rarara} .

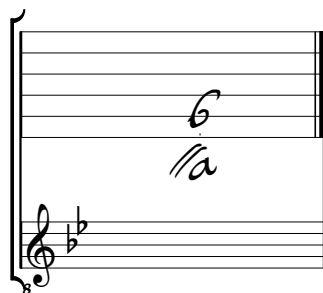
System 4 (measures 13-16): Rhythmic notation: ♩ ♩ ♩ ♩ ♩ ♩ ♩ ♩ ♩ ♩ ♩ ♩. Staff notes: \underline{rar} | \underline{a} | $\underline{6}$ $\underline{6a}$ $\underline{6\partial}$ | $\underline{a6a}$ $\underline{f\partial f}$ | $\underline{\partial f\partial\partial 6a}$ | $\underline{6\partial 66a}$ \underline{r} .

System 5 (measures 17-20): Rhythmic notation: ♩ ♩ ♩ ♩ ♩ ♩ ♩ ♩ ♩ ♩ ♩ ♩. Staff notes: $\underline{6ra}$ \underline{a} | $\underline{6\partial a}$ \underline{r} | \underline{a} \underline{a} | $\underline{6\partial 6a}$ \underline{ra} | \underline{r} .

The score concludes with a decorative flourish on the right side of the final system.

Tonalité : Sol mineur.

Scordature par octave



Accord des 13 chœurs du luth

A musical diagram showing two staves. The upper staff is a six-line staff with a treble clef and a flat key signature (B-flat). It contains a series of handwritten 'a' notes on the lines, starting from the first line and moving up to the sixth line. The lower staff is a five-line staff with a bass clef and a flat key signature (B-flat). It contains a series of handwritten notes on the lines, starting from the first line and moving up to the fifth line, followed by a series of handwritten notes on the lines, starting from the first line and moving up to the fifth line, and ending with the numbers '4 5 6'.