

Auteur(s) anonyme(s)

6 pièces en ré majeur

Manuscrit de Wroclaw 2002

(Pl. WRu 60019)

Folios 10 à 13

Table des pièces

Aria

Menuet

Menuet

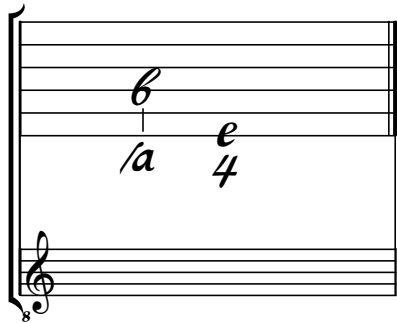
Polonese

Menuet

Gavotte

Tonalité et accord du luth : ré majeur

Scordatura par octave



Accord des 13 chœurs du luth

Musical notation for Accord des 13 chœurs du luth. It shows a lute staff with six lines. The notes are labeled 'a' on the first line, 'a' on the second line, 'a' on the third line, 'a' on the fourth line, 'a' on the fifth line, and 'a' on the sixth line. Below the staff, the notes are labeled 'a /a //a ///a 4 5 6'. A treble clef is positioned below the staff, and an '8' is written below the clef, indicating an octave shift.

Aria

lla lla la a la lla la a la lla lla a lla lla la lla

5

6 6 lla lla a e r lla

12

lla lla lla 6 a lla 6 la a lla 6 la

16

lla 6 la lla la r a a la lla la a lla a a la lla

21

lla lla la a la a la a la lla lla a a a 6 a

26

6 a 6 a 6 a la lla lla 6 lla la a 6

31

35

39

Menuet

3

a r r a r e e a a a e a e r e r r e r r e a

a 6 //a /a //a //a 6

6

f r e a a r r e a a r e e r e r a a r a e r r a e r

a /a a a //a 5 5 //a //a /a

13

e r e e r r r r e r e e r r r r

a /a //a r a a a /a //a a r 5

18

f r e e r e r e r a e r a e r a r r r e r a a f r a r e r r e e r

//a 4 //a a //a /a a /a //a //a

25

e a e f

/a a a //a

Menuet

3

lla a la lla lla 4 5 6 lla

5

a la lla 4 lla a 6

11

6 lla lla 4 lla 6 la a la

18

a lla 4 lla a la a

23

a lla

Polonese

5

9

14

20

24

Menuet

3

1 2 3 4

6

5 6 5 4

11

5 4 5 6 4

16

6 R 6 a 6 a 4

22

6 6

Gavotte

1 2 3 4 5 6 7 8 9 10 11 12 13 14 15 16 17 18 19 20

Musical notation for Gavotte, page 8. The score consists of six systems of musical notation on a five-line staff. Above the staff are rhythmic symbols: vertical stems for eighth notes and curved lines for sixteenth notes. The notes themselves are represented by letters: 'a' for a, 'e' for e, 'g' for g, and 'k' for k. Some notes have a 'r' above them, possibly indicating a trill. The score includes various ornaments such as slurs and triplets. At the end of the piece, there is a decorative flourish. The page number '8' is located at the top left of the score area.

1 2 3 4 5 6 7 8 9 10 11 12 13 14 15 16 17 18 19 20

4 5 6 7 8 9 10 11 12 13 14 15 16 17 18 19 20

6 7 8 9 10 11 12 13 14 15 16 17 18 19 20

12 13 14 15 16 17 18 19 20

16 17 18 19 20

20