

(Silvius Leopold Weiss ?)

(1687 - 16 oct. 1750)

Menuet

~~WeissSW~~

La mineur

Manuscrit de Wroclaw

Wroclaw, Biblioteka Uniwersytecka

PL-WRu ms. 60019 Odds. Mus. (olim Ms. Mf. 2002)

Page 100

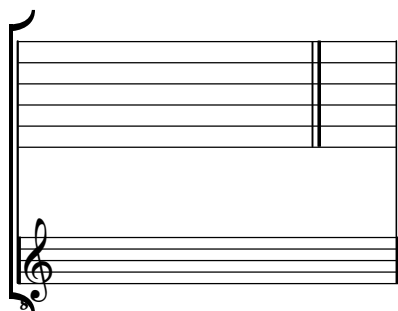


Menuet

Musical score for Menuet in G minor by Silivius Leopold Weiss. The score is written for a single melodic line on a five-line staff. It features a 3/4 time signature and includes various musical notations such as notes, rests, ornaments, and fingerings. The piece is divided into measures, with measure numbers 5, 11, 15, 20, 26, and 32 indicated on the left. The notation includes slurs, ties, and dynamic markings like 'h' and 'f'. The piece concludes with a decorative flourish.

Accord ordinaire du luth : La mineur

Scordature par octave



Accord des 13 chœurs du luth

