

*Compositeur anonyme*

# 3 pièces

Ré majeur

**Manuscrit de Wrocław**

*Wrocław, Biblioteka Uniwersytecka*

PL-WRu ms. 60019 Odds. Mus. (olim Ms. Mf. 2002)

*Pages 118, 119*



# Menuet

Musical score for a Minuet in G major, BWV 501 by Johann Sebastian Bach. The score is in 3/4 time and consists of 24 measures. It features a single melodic line with various ornaments, including mordents, grace notes, and triplets. The bass line is indicated by 'a' and '6' symbols. The piece concludes with a repeat sign and a final cadence.

Measure 1:  $\text{a} \text{a} \text{r} \text{e}$  (with mordents and grace notes).  
 Measure 2:  $\text{g} \text{e} \text{f} \text{e}$  (with a triplet over  $\text{g} \text{e} \text{f}$ ).  
 Measure 3:  $\text{a} \text{a} \text{e} \text{a}$  (with mordents).  
 Measure 4:  $\text{r} \text{a} \text{e} \text{r} \text{a}$  (with mordents).  
 Measure 5:  $\text{r} \text{a} \text{r} \text{a} \text{r} \text{a} \text{r} \text{a} \text{r} \text{a} \text{r}$  (with mordents).  
 Measure 6:  $\text{a} \text{a} \text{e} \text{a}$  (with mordents).  
 Measure 7:  $\text{r} \text{a} \text{r} \text{a} \text{r} \text{a} \text{r} \text{a} \text{r} \text{a} \text{r}$  (with mordents).  
 Measure 8:  $\text{g} \text{e} \text{f} \text{e}$  (with a triplet over  $\text{g} \text{e} \text{f}$ ).  
 Measure 9:  $\text{a} \text{a} \text{e} \text{a}$  (with mordents).  
 Measure 10:  $\text{a} \text{a} \text{r} \text{e}$  (with mordents).  
 Measure 11:  $\text{r} \text{a} \text{e} \text{r} \text{a}$  (with mordents).  
 Measure 12:  $\text{a} \text{a} \text{r} \text{e}$  (with mordents).  
 Measure 13:  $\text{a} \text{a} \text{r} \text{e}$  (with mordents).  
 Measure 14:  $\text{g} \text{g} \text{h} \text{g} \text{h}$  (with mordents).  
 Measure 15:  $\text{h} \text{a} \text{a} \text{h} \text{a}$  (with mordents).  
 Measure 16:  $\text{g} \text{g} \text{h} \text{g} \text{h}$  (with mordents).  
 Measure 17:  $\text{h} \text{a} \text{a} \text{h} \text{a}$  (with mordents).  
 Measure 18:  $\text{a} \text{r} \text{e} \text{e}$  (with mordents).  
 Measure 19:  $\text{a} \text{r} \text{e} \text{e}$  (with mordents).  
 Measure 20:  $\text{a} \text{b} \text{b} \text{r} \text{a} \text{a}$  (with mordents).  
 Measure 21:  $\text{a} \text{r} \text{e} \text{a} \text{a} \text{e}$  (with mordents).  
 Measure 22:  $\text{g} \text{f} \text{g} \text{e} \text{e} \text{r} \text{r}$  (with triplets over  $\text{g} \text{f} \text{g}$  and  $\text{e} \text{e} \text{r}$ ).  
 Measure 23:  $\text{a} \text{r}$  (with mordents).  
 Measure 24:  $\text{a} \text{r} \text{a} \text{e}$  (with mordents).

# Ariet Menuet

3 a a e | r e r a e a | a r r e r

a a a | a a | a a

4 a a | e a e a e e | e r e a | e r a r | a

a a 6 | a a | a a r | a a a | a 6 (1\*)

9 e r e | r e r b r r | r a e a | e r a e a a

a a | a 5 a 4 | a a

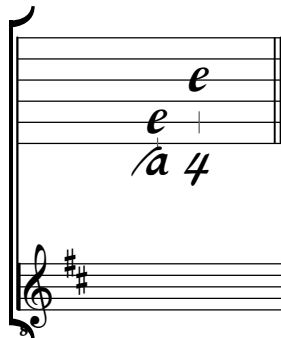
13 e r a | a e r e | e r a r e | a

a a a | a a a | a a 6 | a

# Polonese

# Tonalité et accord du luth : Ré majeur.

## *Scordature par octave*



## *Accord des 13 chœurs du luth*

