

Compositeur anonyme

Sarabanda

en ré majeur

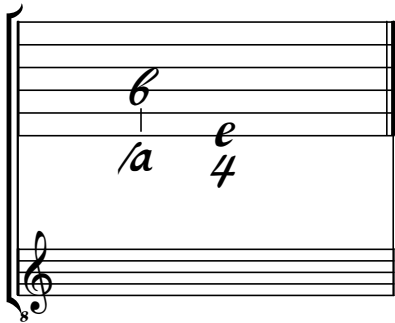
Manuscrit de Wroclaw 2002

(Pl. WRu 60019)

Folio 14

Tonalité et accord du luth : ré majeur

Scordatura par octave



Accord des 11 chœurs du luth

Musical notation for Accord des 11 chœurs du luth. It shows a lute with six strings. The top string is tuned to A (labeled 'a'). The second string is tuned to A (labeled 'a'). The third string is tuned to A (labeled 'a'). The fourth string is tuned to A (labeled 'a'). The fifth string is tuned to A (labeled 'a'). The sixth string is tuned to A (labeled 'a'). The notation shows the notes for each string: the top string has a whole note A; the second string has a whole note A; the third string has a whole note A; the fourth string has a whole note A; the fifth string has a whole note A; the sixth string has a whole note A. The notes are labeled 'a' for the first five strings and 'a /a //a ///a 4' for the sixth string. A treble clef is positioned below the strings, and an octave sign (8) is placed below the treble clef.

Sarabanda

3

e r f a a | a | f f a | e | e

a a | r e r a | a/a | //a/a | a a | /a a a

6

a | f f a | e a | f e a | a a | f f a

r r a | a/a | //a a | a a/a | a a | r a/a | a a

12

a a | e a e r a | r a r e a | a e r a | e e | a a

//a | //a | e | r | a | 4

18

e a e r e | a a | a e r e a | a a | e a e e r

4 | r | //a | 4 | //a

23

a e a a | a e a

//a

Da Capo